



Hertfordshire and  
West Essex Integrated  
Care System



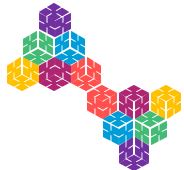
Hertfordshire and  
West Essex  
Integrated Care Board

# Hertfordshire and West Essex Neighbourhood Pack – South Uttlesford PCN

2025-2026  
PHM Team

Working together  
for a healthier future





## Key messages

The South Uttlesford population profile is similar to West Essex and the ICB. However, a higher proportion of the population live in the two least deprived quintiles compared to the WE.

The population of South Uttlesford is growing alongside demographic shifts, with an ageing population that will grow more rapidly compared to the overall population.

Although Uttlesford has significantly lower proportions of children living in poverty compared with West Essex and England, 6% of children in Uttlesford live in poverty. The areas within Uttlesford with the highest child poverty are Stansted South & Birchanger (12.4%) and High Easter & the Rodings (9.6%).

Although Uttlesford is an affluent district there is inequality within the locality, South Uttlesford data shows a higher proportion of alcohol abuse, obesity and insufficient physical activity compared to WE. These trends are particularly pronounced among older adults (65+), individuals in the most deprived quintile and BAME populations, for alcohol abuse and will contribute to a lower proportion of the population categorised as generally healthy in the segmentation model.



Hertfordshire and  
West Essex Integrated  
Care System





Hertfordshire and  
West Essex Integrated  
Care System

**Demographics, wider determinants  
and prevention**

**Working together  
for a healthier future**

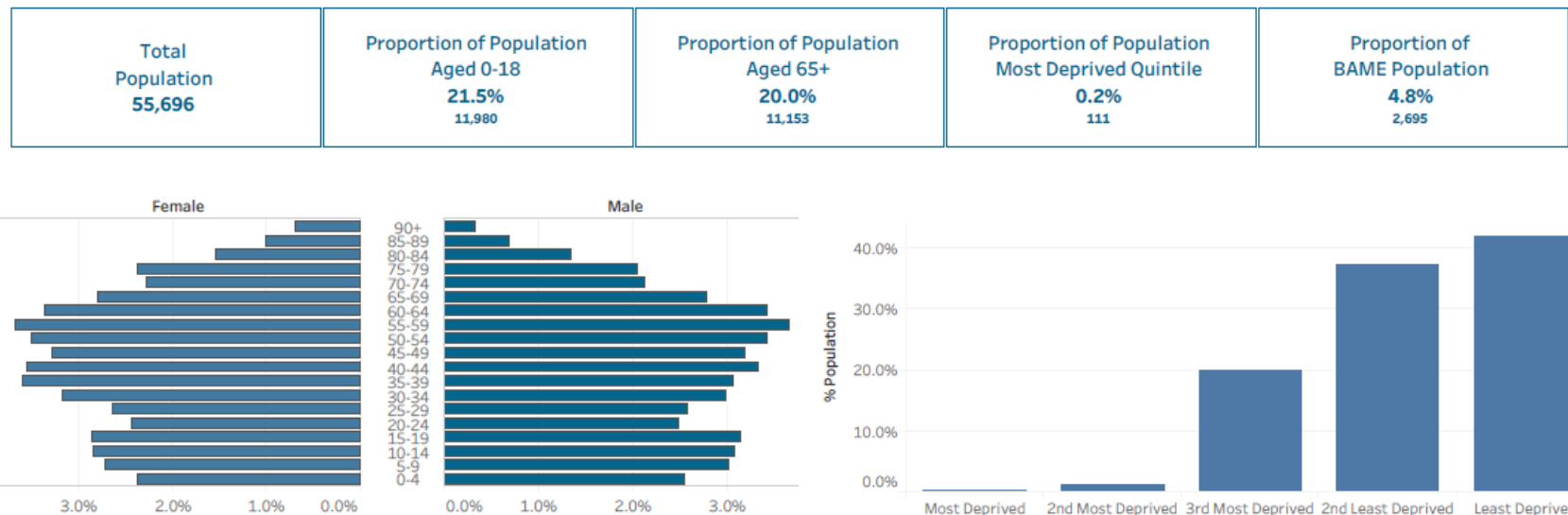




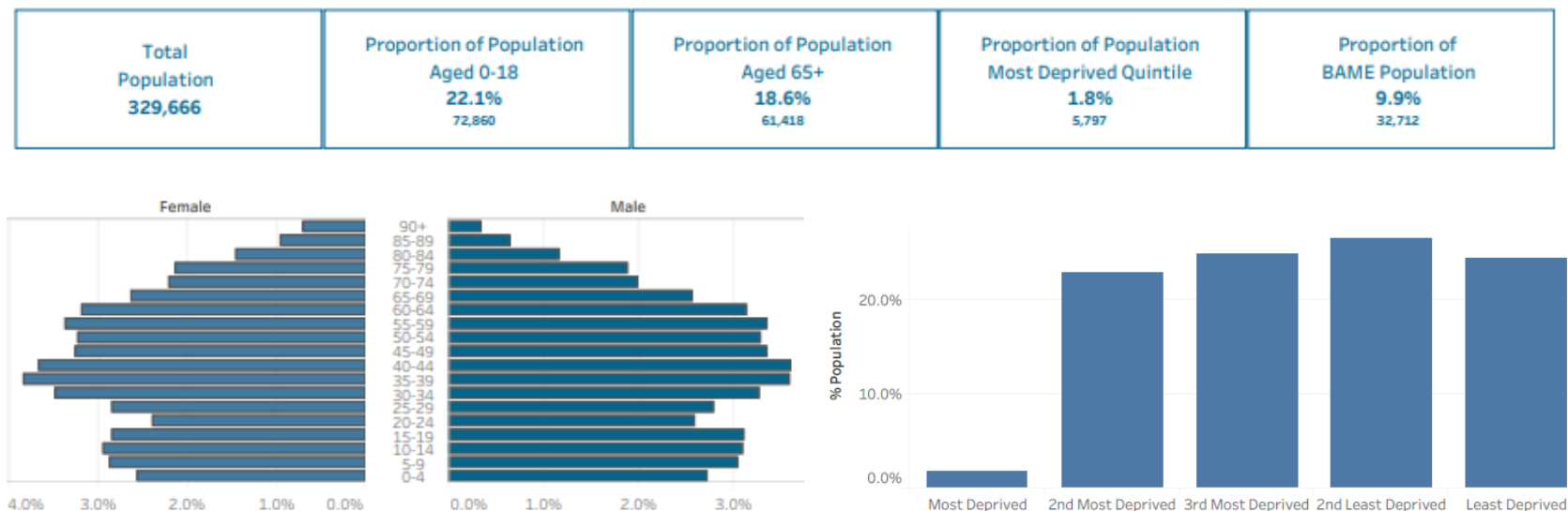
# Population profile

- South Uttlesford has a higher proportion of the population aged 65+ compared to WE.
- A higher proportion of people live within the most affluent quintiles.
- Additional information is available on [DELPPHI](#) for age, deprivation, ethnicity, gender and main language at HCP, Locality, PCN, GP practice and Local authority lower tier population.

## South Uttlesford



## WE



Hertfordshire and  
West Essex Integrated  
Care System



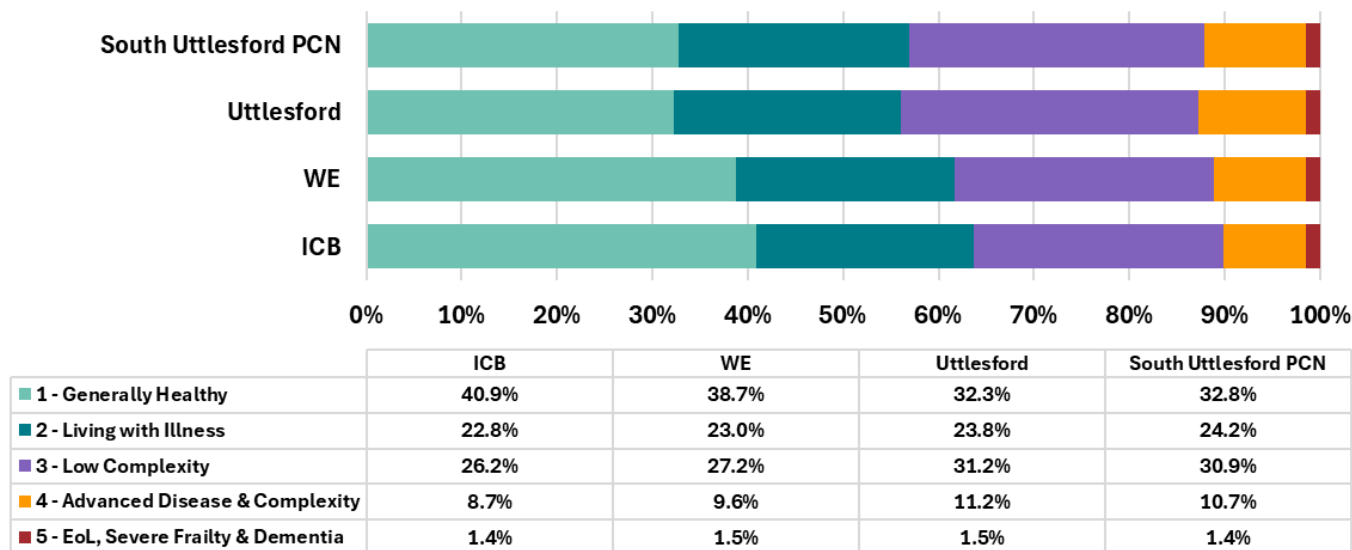
Source: [DELPPHI - Population Profile](#)



# Segmentation profile    Provisional Data

- The illustrations on the right shows the segmentation model for South Uttlesford PCN, Locality, WE and ICB. This is a snapshot from June 2025.
- South Uttlesford's has a lower number of the population in the 'Generally Healthy' segment. This is linked to higher prevalence of [Long-Term Conditions](#). Higher prevalence of long term conditions can be driven by higher rates of risk factors ([behavioural risk factors](#) and deprivation), improved disease detection, or better coding and recording.
- Further detail on the segmentation model can be found in the [glossary](#)

South Uttlesford PCN, Uttlesford, WE & ICB PHM Segmentation Profile



Hertfordshire and  
West Essex Integrated  
Care System



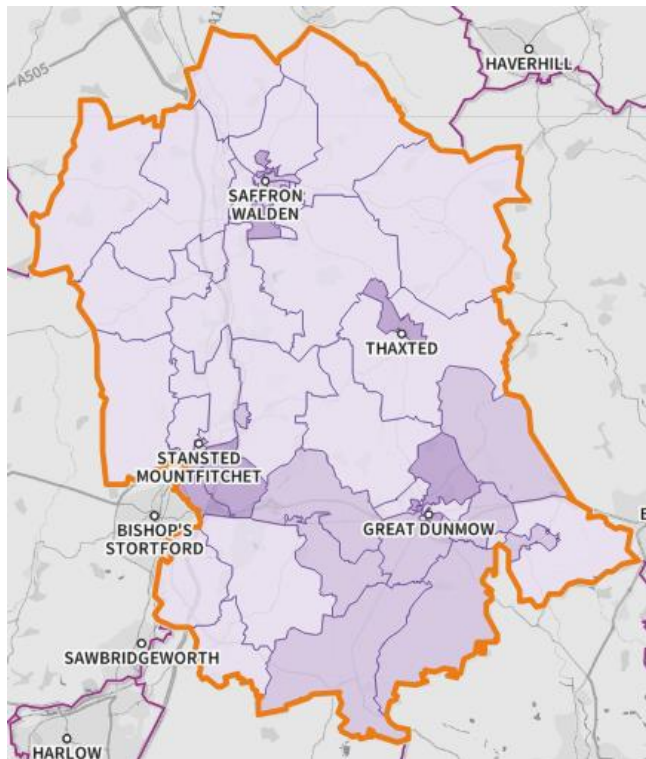
Source: DELPPHI: HWE Segmentation model



# Children and older people living in poverty

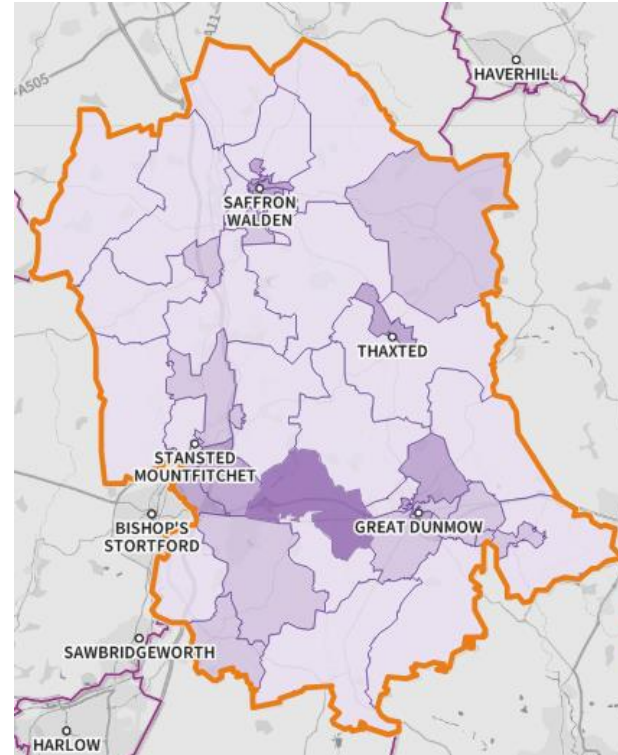
- Income Deprivation Affecting Children Index (IDACI) and Older people index (IDAOP) measures the proportion of all children aged 0 to 15 and adults aged 60 or over, respectively who experience living in income deprived families or income deprivation.
- The IDACI and IDAOP are illustrated on the maps. The darker the colour, the higher the level of deprivation.

Income Deprivation affecting children



- Income deprivation affecting children index (IDACI) 2019, shows North Uttlesford at 6.3%, WE at 12.6% and England at 17.1%. The areas within Uttlesford with the highest index are Stansted South & Birchanger (12.4%) and High Easter & the Rodings (9.6%).

Income deprivation affecting older people



- Income deprivation affecting older people index (IDAOP) 2019, shows Uttlesford at 7.7%, WE at 11.1% and England at 14.2%.



Hertfordshire and  
West Essex Integrated  
Care System



Source: [Fingertips](#) | [Department of Health and Social Care](#) and [SHAPE](#)





# Behavioural risk factors

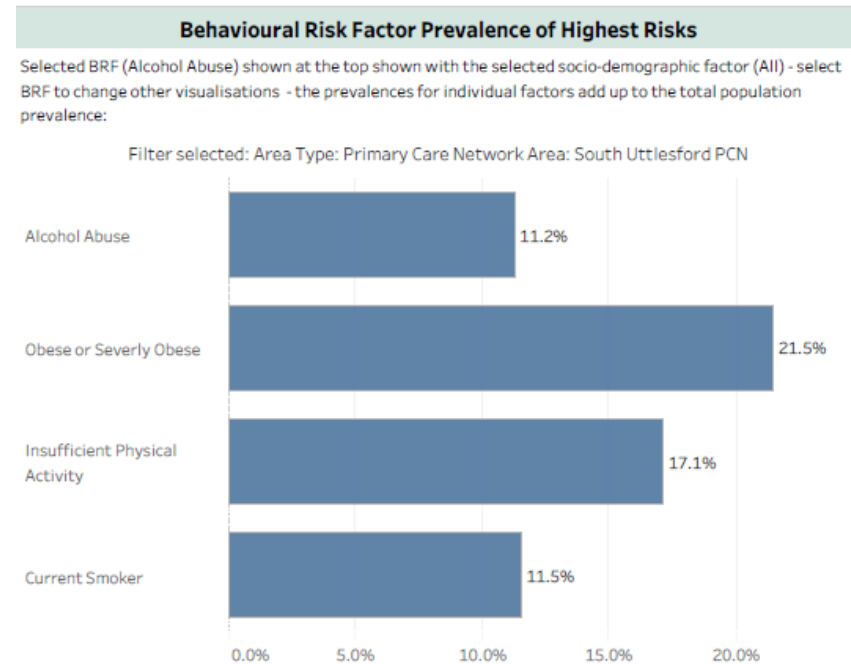
- South Uttlesford data shows a higher proportion of alcohol abuse, obesity and insufficient physical activity compared to WE. These trends are particularly pronounced among older adults (65+), individuals in the most deprived quintile and BAME populations, for alcohol abuse.
- These behavioural risk factors are likely contributing to a lower proportion of the population being classified as 'generally healthy' in the segmentation model compared to WE, as these behaviours could lead to adverse health outcomes.
- Please use the following [link](#) for DELPPHI to review HWE, WE, Locality, PCN, GP practice and Local authority lower tier population demographic profiles by age, deprivation, ethnicity, gender and main language, in greater detail.
- For additional information on childhood obesity please review the [CYP insights](#) (Feb 2025) and for smoking and pregnancy review [Fingertips | Department of Health and Social Care](#).



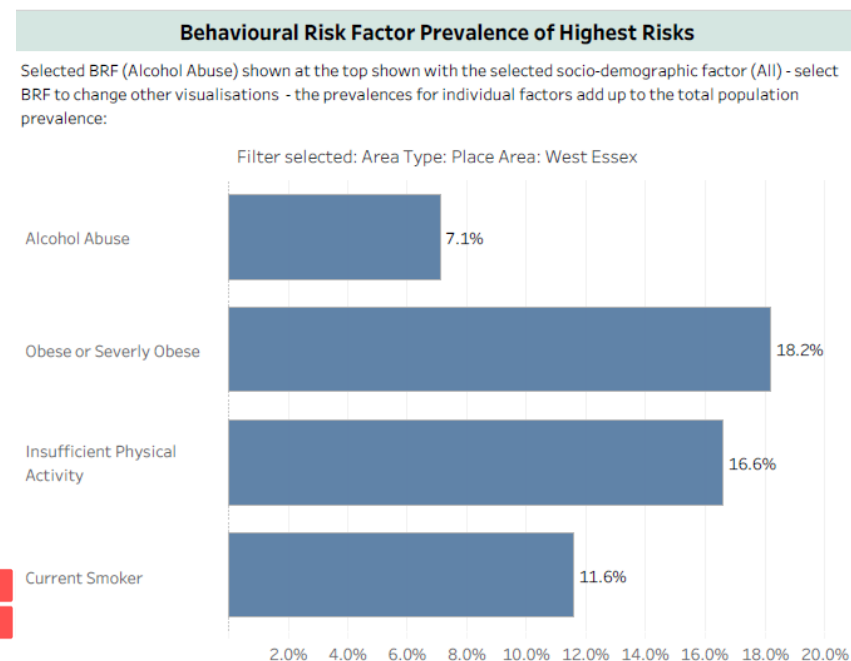
Hertfordshire and  
West Essex Integrated  
Care System



South Uttlesford



WE



Source: [DELPPHI - Population Profile](#)

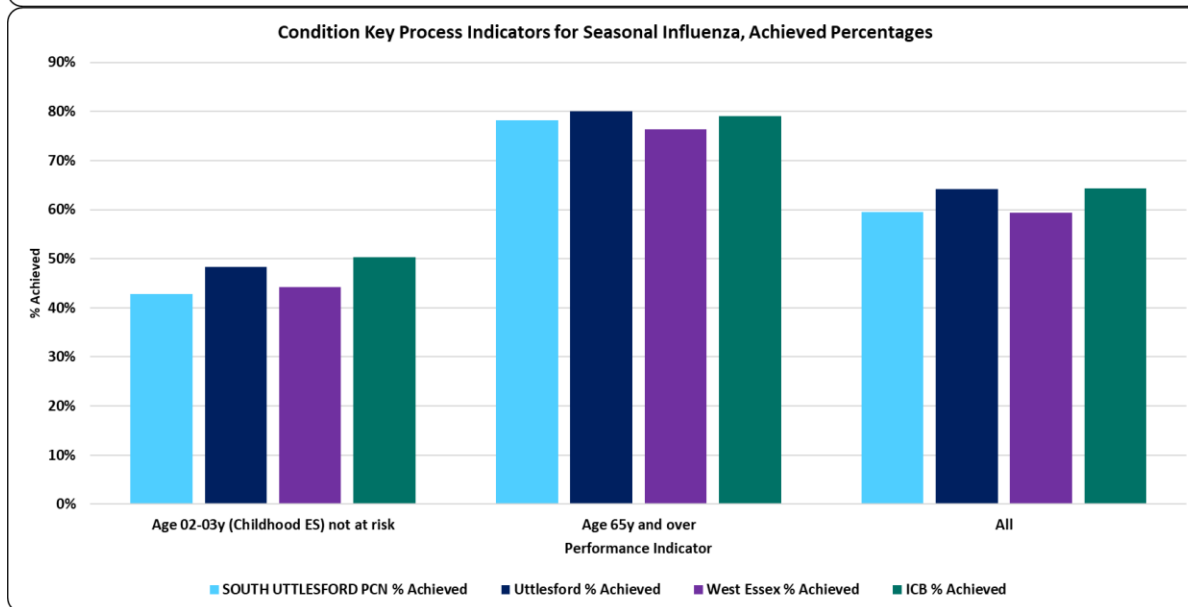
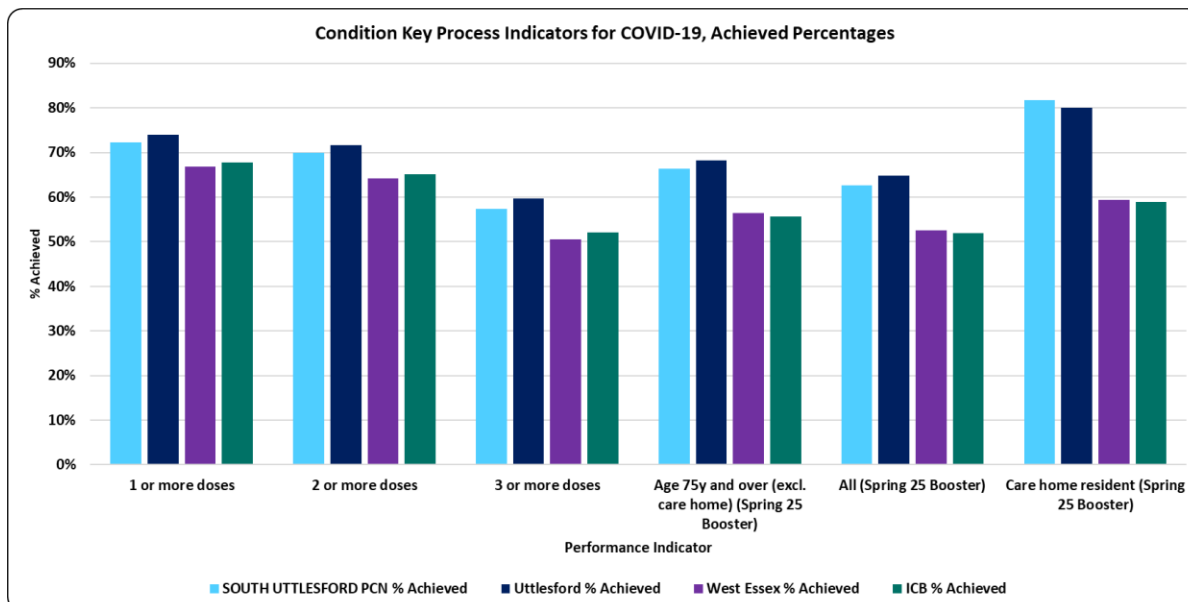


# Immunisation

- South Uttlesford's percentage of people immunised against Covid-19 is above WE and the ICB across all indicators.
- Seasonal influenza percentage achieved for all areas is above or similar to the place coverage.



Hertfordshire and  
West Essex Integrated  
Care System



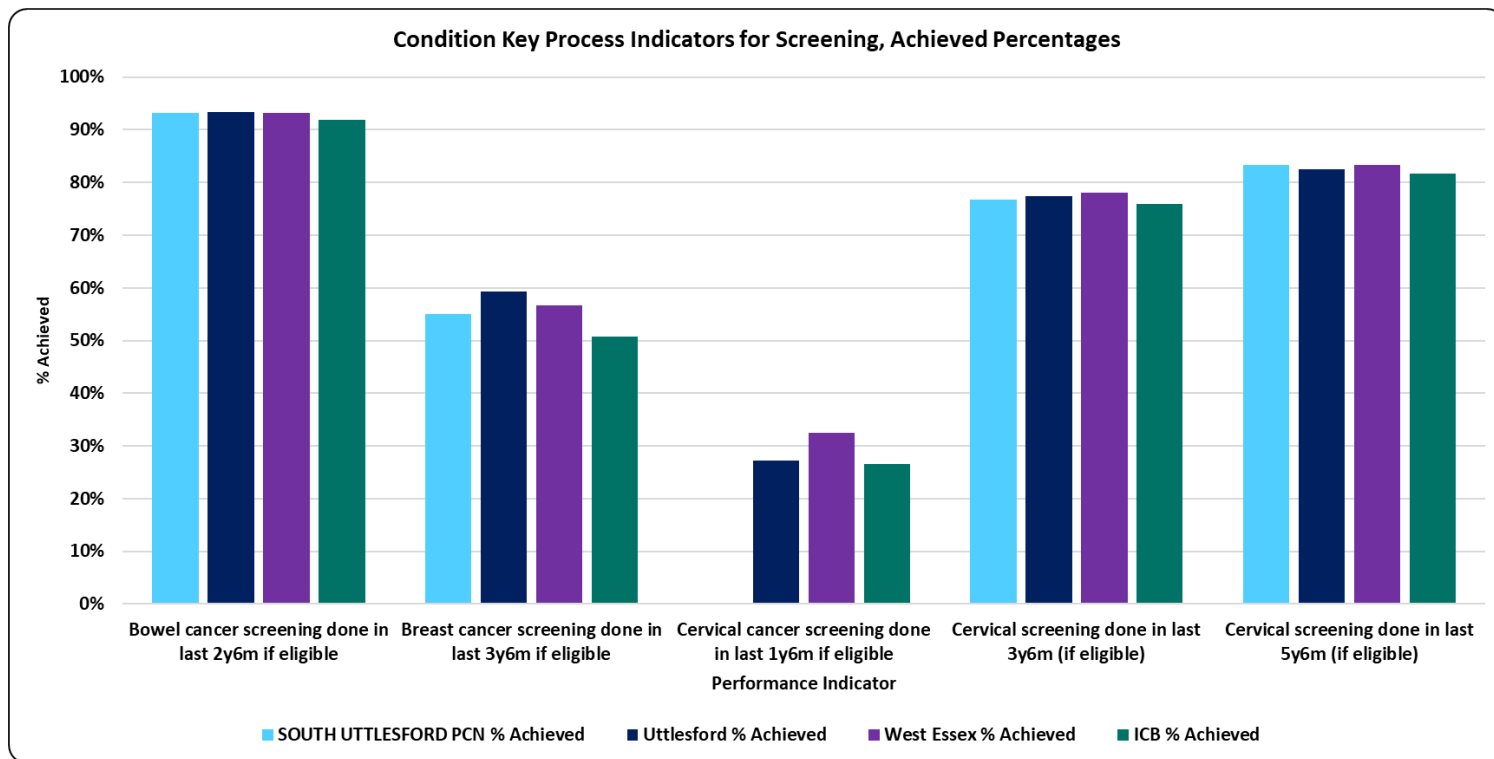
Source: [Ardens Manager](#)





# Screening

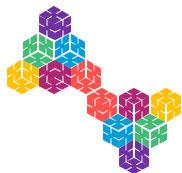
- Better outcomes are achieved through earlier diagnosis of cancer. The national target is for 75% of cancer diagnosis to be at early stage (stage 1 or 2). Uptake of cancer screening programmes are a core enabler for early detection of cancer.
- The chart on the right shows the percentage of people screened by cancer type.
- South Uttlesford's percentage screening for most areas is similar to WE and the ICB.



Hertfordshire and  
West Essex Integrated  
Care System



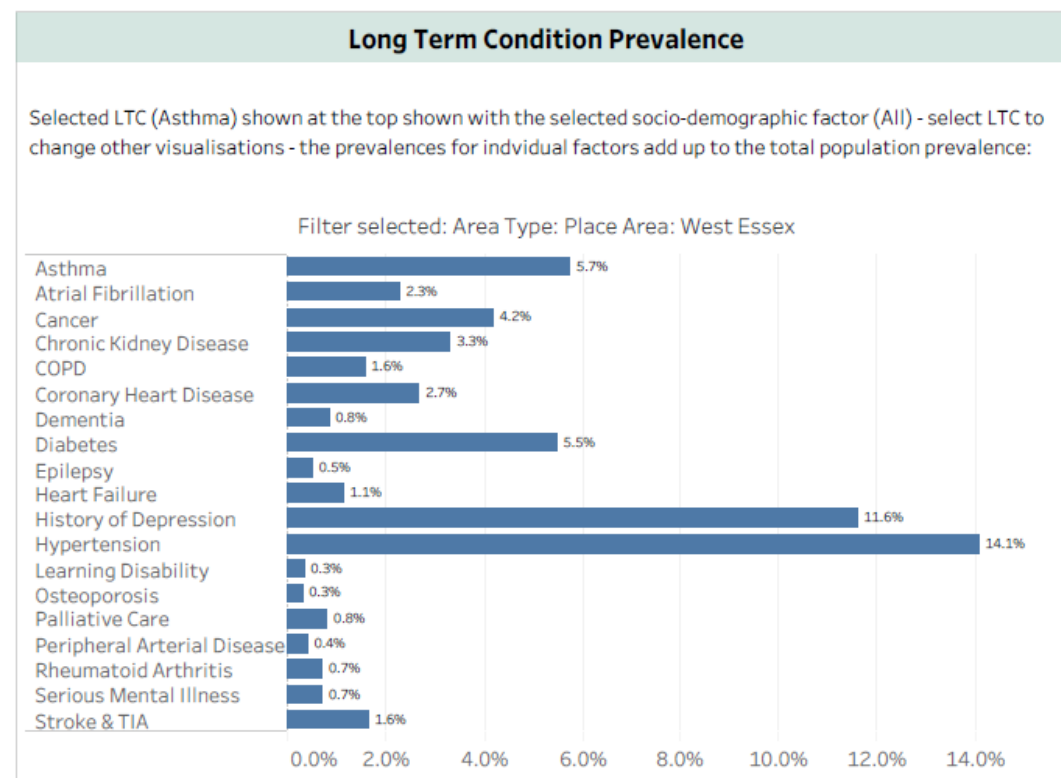
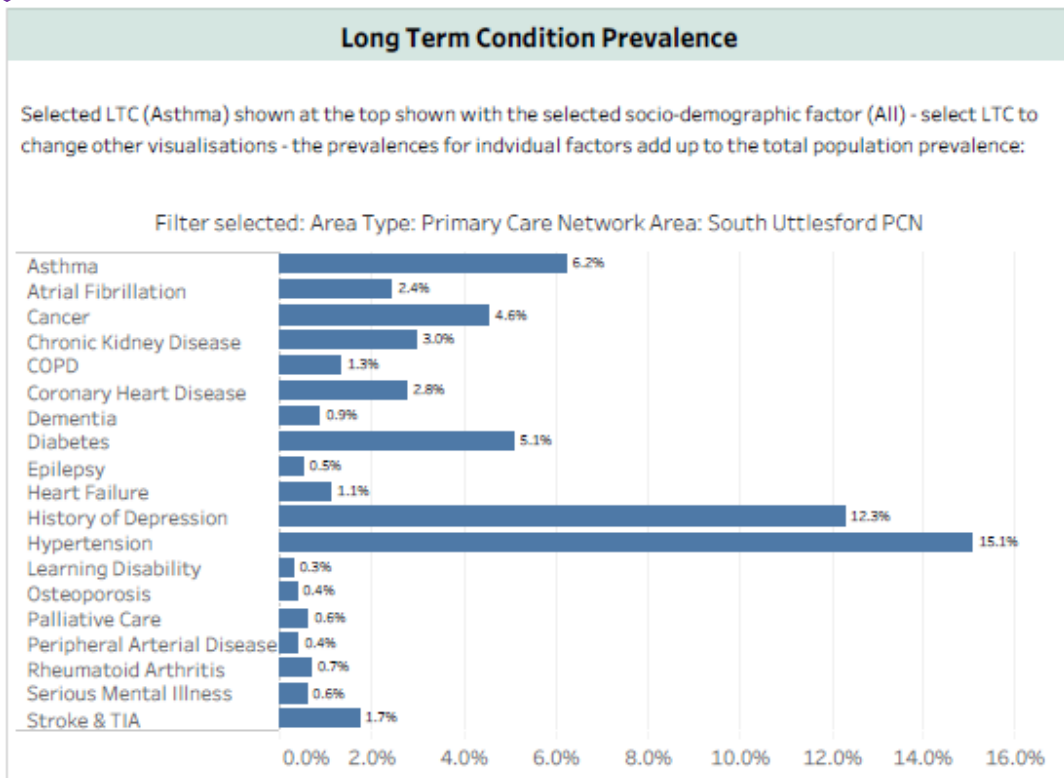
Source: [Ardens Manager](#)



# Prevalence of Disease Registers

South Uttlesford

WE



- The above charts show that South Uttlesford has higher recording for most LTC compared to WE. Please note these charts will not reconcile to QOF as a wider set of codes looking at all settings data is used.
- Additional information is available in [DELPPHI](#) to review inequalities age, deprivation, ethnicity, gender and main language and compare to HCP, Locality, PCN, GP practice and Local authority lower tier.



Hertfordshire and  
West Essex Integrated  
Care System



Source: [DELPPHI - Population Profile](#)



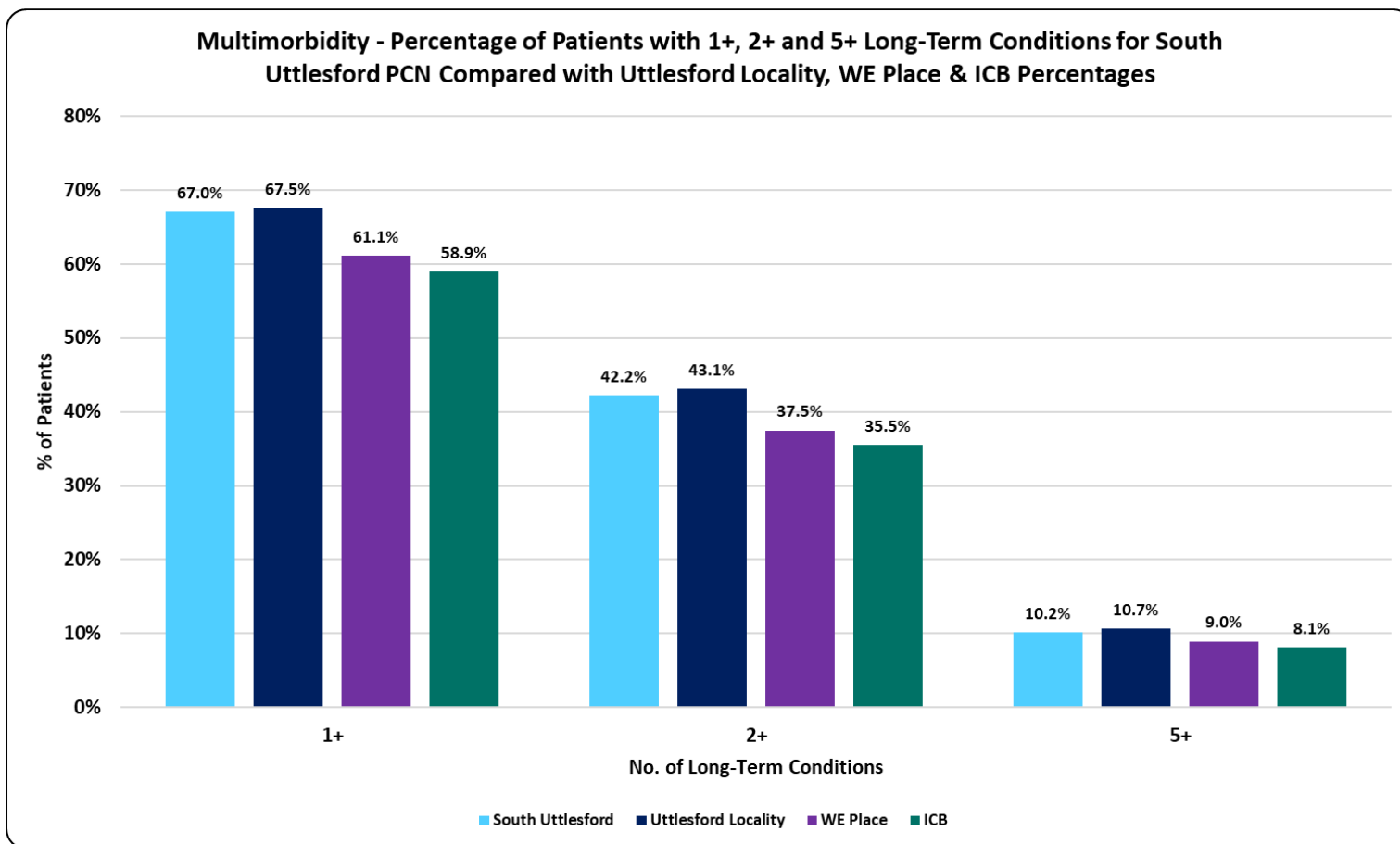
# Prevalence of Multimorbidity

## Provisional Data

The Long-Term Condition (LTC) count data for this page is based on the ICB Segmentation model.

For the Multimorbidity prevalence we can see:

- That in South Uttlesford, the prevalence for those with 2 or more LTCs is higher than WE and the ICB which may in part reflect the older population of the PCN.
- The proportion of patients living with 5+ LTCs in South Uttlesford is higher than WE and the ICB.
- South Uttlesford's segmentation profile, characterised by a higher proportion of the population with LTCs and behavioural risk factors, may be contributing to the higher proportions observed compared to WE and the ICB.



Hertfordshire and  
West Essex Integrated  
Care System



Source: : DELPPHI: HWE Segmentation model



Hertfordshire and  
West Essex Integrated  
Care System



Hertfordshire and  
West Essex  
Integrated Care Board

# Children & Young People Management and outcomes

Working together  
for a healthier future





# Children's Care: Medium Term Plan Indicators

- The Medium Term Plan dashboard on DELPPHI tracks key indicators for children and young people under 18, using data from SUS and community providers. It focuses on three main measures:
  - Community paediatric waits over 65 weeks (not reported for WE)
  - Emergency admission rates
  - A&E attendance rates
- Recent data shows emergency admission rates higher than previous years for children in West Essex, whilst A&E attendance rates have remained steady in the last year.
- Note: From November '24, PAH and ENHT changed how SDEC is coded, significantly reducing emergency admission counts. This affects West Essex, East and North Herts, and the ICB overall. Measures referencing emergency admissions will appear lower and should be interpreted with caution.

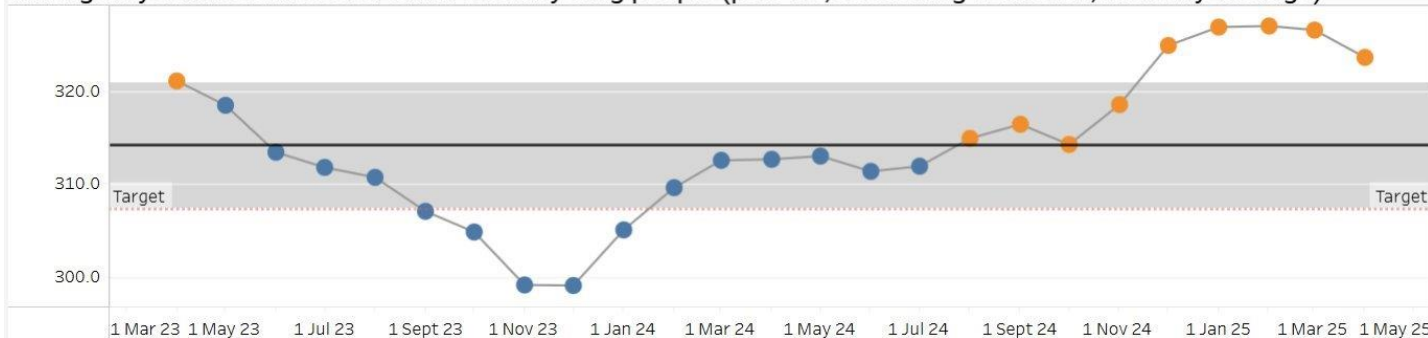


Hertfordshire and  
West Essex Integrated  
Care System

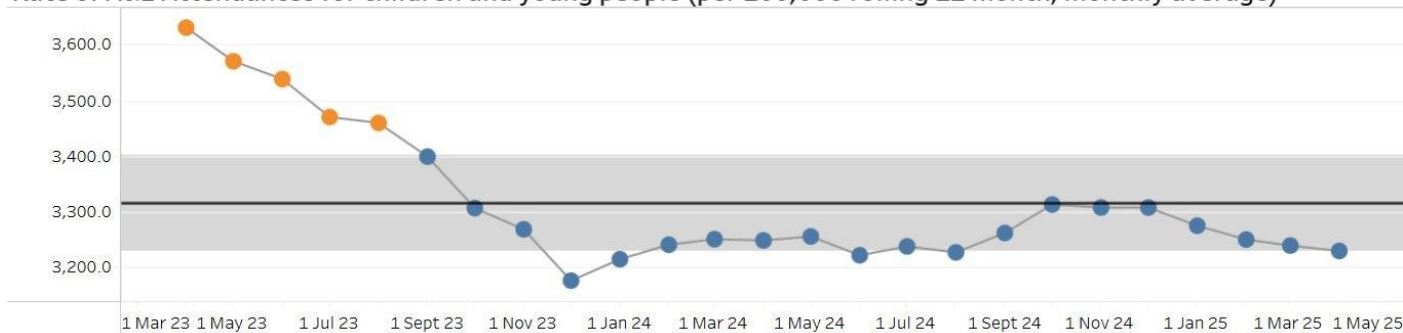


WE

Emergency admission rate for children and young people (per 100,000 rolling 12 month, monthly average)



Rate of A&E Attendances for children and young people (per 100,000 rolling 12 month, monthly average)



Source: [DELPPHI - HWE Mid Term Plan Dashboard](#)



# Children and Young People: Programme outcomes

- HWE programme outcomes shows the end point health outcomes that we aim to improve for our population through delivering best practice and evidenced interventions.
- The table on the right shows CYP outcomes for South Uttlesford PCN from the [Outcomes Framework](#)
- There has been a decrease in the overall cost of emergency admissions for 0–17-year-olds.

		Current Period	Previous Period	Difference	% Difference
Measure Cat	Measure				
Whole System	Emergency Admissions, Preventable Chronic Ambulatory Care Sensitive Conditions, Crude Rate per 100,000, aged between 0-18	Supressed due to small numbers			
	Total Cost of Emergency Hospital Care, Crude Rate per 100,000, aged between 0-18	£714k £90k / 12,691	£875k £94k / 10,817	-£160,538	-18.3%
Programme	Mortality, Crude Rate per 100,000, aged between 1-17	Supressed due to small numbers			
	Emergency Admissions, Intentional Self-Harm, DSR per 100,000, aged between 10-24	Supressed due to small numbers			
	Emergency Admissions LoS >0, Crude Rate per 100,000, aged between 0-17	158.5 19 / 11,987	224.3 23 / 10,253	-65.8	-29.3%
Workstream	Emergency Admissions, DSR per 100,000, aged between 0-4	482.4 13 / 2,695	823.6 19 / 2,307	-341.2	-41.4%
	Emergency Admissions, Asthma Diabetes and Epilepsy, Crude Rate per 100,000, aged between 0-18	Supressed due to small numbers			



Hertfordshire and  
West Essex Integrated  
Care System

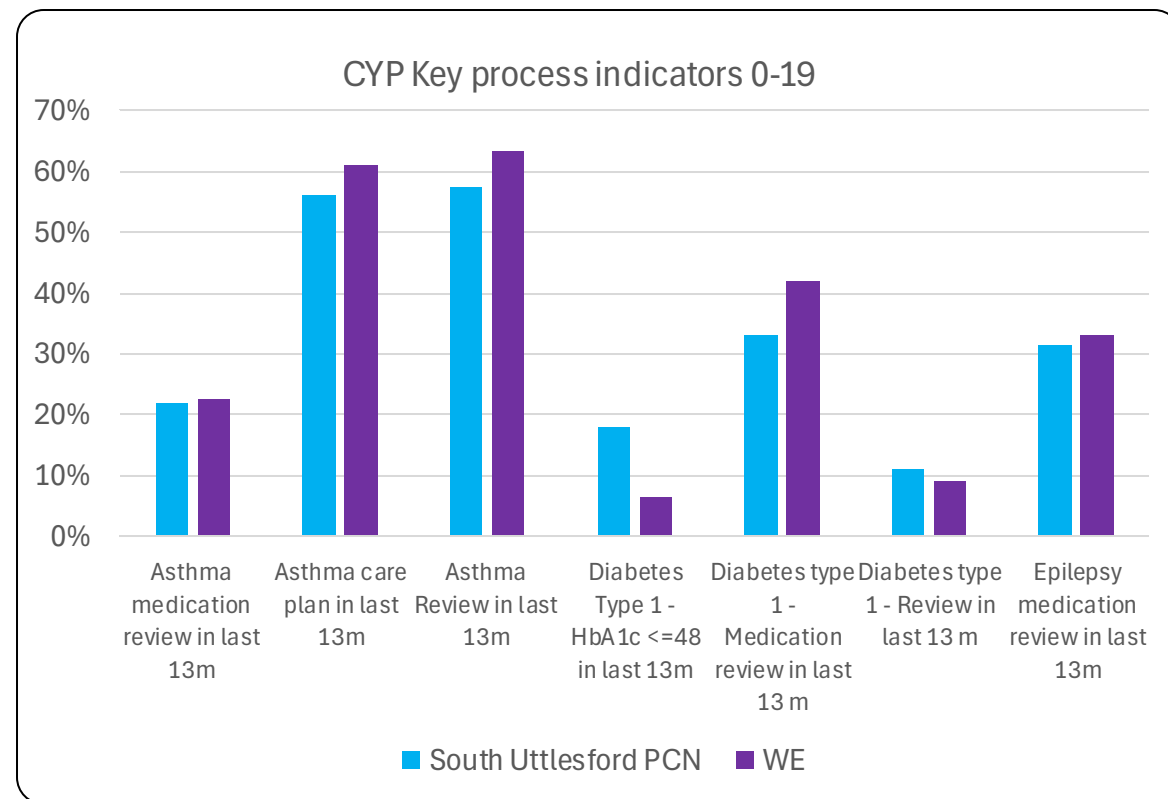


Source: [DELPPHI - HWE Outcomes Dashboard](#)



# Children and Young People: Key process indicators (0-19 years)

- Data provided by Ardens Manager highlights key process indicators for children and young people with Asthma, Diabetes and Epilepsy over the 13 months leading up to July 15, 2025.
- The graph compares these indicators between South Uttlesford PCN and WE for children and young people aged 0-19.
- South Uttlesford PCN has fewer medication reviews recorded for Asthma, Diabetes, and Epilepsy compared to WE.



Hertfordshire and  
West Essex Integrated  
Care System



Source: [Ardens Manager](#)





Hertfordshire and  
West Essex Integrated  
Care System



Hertfordshire and  
West Essex  
Integrated Care Board

# Hypertension, Cardiovascular Disease and Long-Term Conditions

## Management and Outcomes

Working together  
for a healthier future





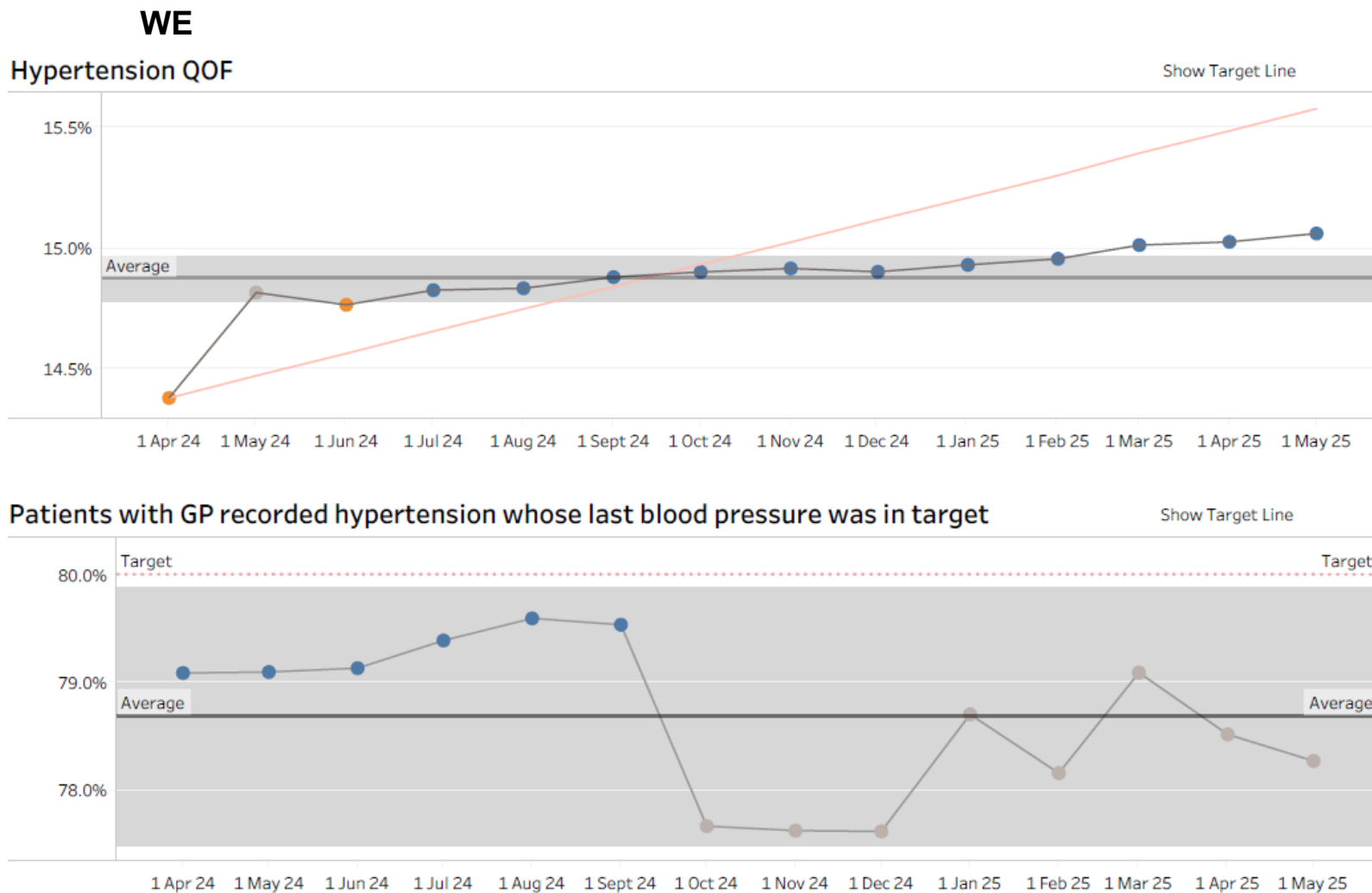
# Hypertension: Medium Term Plan Indicators

Medium Term Plan indicators on DELPPHI highlight key priorities related to Hypertension diagnosis and management. Information is currently reported at HCP/WE level.

For Hypertension Medium Term Plan indicators, the WE data shows:

- Compared to the ICB, WE Hypertension QOF prevalence continues to rise indicating improved identification of people living with hypertension.
- For Patients with GP recorded hypertension whose last blood pressure was in target, we can see that the data shows a higher proportion for West Essex compared to the ICB's rate. In the most recent month, the trend shows a decrease for the area which follows that of the ICB's trend.

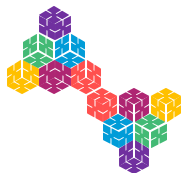
To review these indicators in more detail, please go the CVD & Hypertension page of the DELPPHI Medium Term Plan dashboard found [here](#).



Hertfordshire and  
West Essex Integrated  
Care System



Source: [DELPPHI - HWE Mid Term Plan Dashboard](#)



# Hypertension: QOF Indicators

- Reviewing the PCN on their percentage achieved from the 2024/25 QOF, we can see that:
  - South Uttlesford PCN is showing above the WE value for both Hypertension indicators looking at BP within target range.
  - In the ICB as of April 2025, 87% of people aged 45+ have had a BP done in the last 5 years.
- For a further detailed review of all the QOF indicators for 2024/25, please visit the Ardens Manager pages [here](#).

	Hypertension	
	Review	
	HYP008: Latest BP 140/90 or less (or equivalent home value) in last 12m if 79y or under	HYP009: Latest BP 150/90 or less in last 12m if 80y or over
ICB	77.0%	85.0%
West Essex Place	77.0%	85.0%
Uttlesford Locality	77.9%	85.2%
NORTH UTTLESFORD PCN	76.0%	85.0%
SOUTH UTTLESFORD PCN	79.6%	85.4%



Hertfordshire and  
West Essex Integrated  
Care System



Source: [Ardens Manager](#)



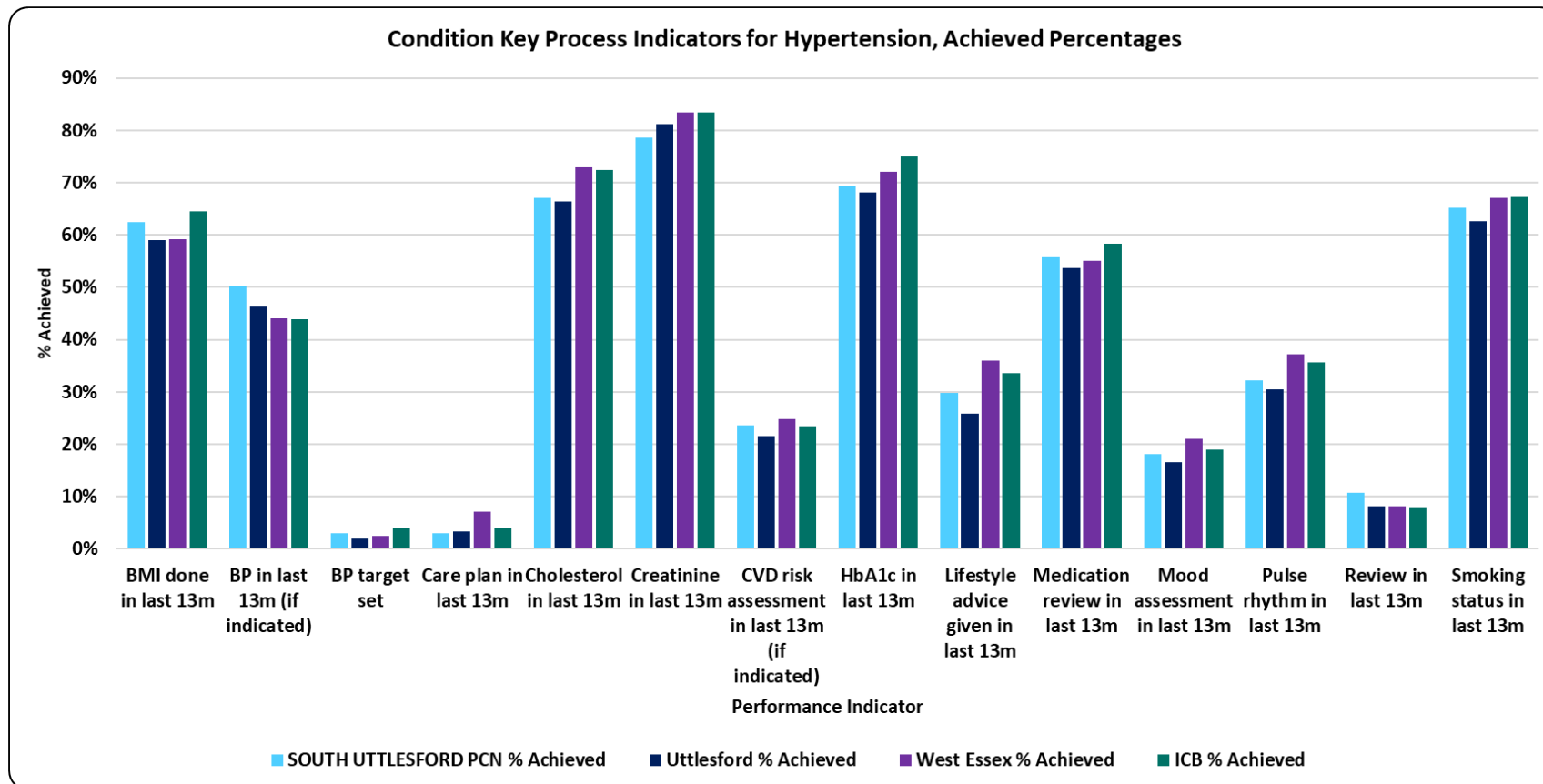
# Hypertension: Key Care Process Indicators

For the Hypertension key process review indicators, we can see that for the PCN:

- South Uttlesford PCN achieves higher percentages than WE and ICB levels, in 4 out of the 14 process indicators shown.
- To review these, and other indicators in detail, please go to the Hypertension pages in Ardens Manager [here](#).

Areas of opportunity for the PCN are:

- Care Plans
- Cholesterol checks
- Creatine checks
- HbA1c checks
- Lifestyle Advice Given
- Pulse Rhythm Assessments



Hertfordshire and  
West Essex Integrated  
Care System



Source: [Ardens Manager](#)



# Cardiovascular Disease (CVD) & Other Long-Term Conditions (LTC): ECF & QOF Indicators

- The 2024/25 QOF CVD indicators are shown on this page; other QOF LTC indicators can be viewed via Ardens Manager [here](#).
- Reviewing South Uttlesford PCN on their percentage achieved from the 2024/25 QOF, we can see that:
  - There is a varied mix of achievements across the indicators.
  - There is opportunity to increase the percentage achieved for CVD and AF indicators.

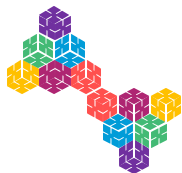
	Atrial Fibrillation				Atrial Fibrillation		CVD Secondary Prevention			Coronary Heart Disease		
	ECF				QOF		ECF			QOF		
	BP done	Chest pain assessment done	ORBIT score done	Review done	AF006: CHA2DS2-VASc recorded in last 12m	AF008: On DOAC or Vitamin K antagonist if CHA2DS2-VASc >= 2	On high-intensity statin, ezetimibe or LLT max tol/ci/dec	All (CHD, CVA/TIA or PAD)	Target met (LDL-cholesterol <=2.0 or Non-HDL cholesterol <=2.6)	CHD005: Anti-platelet or anti-coagulant in last 12m	CHD015: Latest BP 140/90 or less in last 12m if 79y or under	CHD016: Latest BP 150/90 or less in last 12m if 80y or over
ICB	90.2%	20.1%	39.9%	34.3%	97.0%	96.3%	75.3%	100.0%	12.8%	96.5%	83.5%	89.5%
West Essex Place	89.1%	26.1%	38.3%	33.7%	97.3%	95.8%	75.5%	100.0%	10.4%	96.6%	83.9%	89.9%
Uttlesford Locality	87.3%	22.0%	42.3%	36.9%	97.0%	96.0%	73.9%	100.0%	9.7%	97.6%	83.8%	90.3%
NORTH UTTLESFORD PCN	89.9%	21.4%	37.8%	33.6%	96.9%	96.1%	74.6%	100.0%	11.3%	97.7%	83.5%	90.6%
SOUTH UTTLESFORD PCN	84.8%	22.6%	46.6%	40.0%	97.2%	95.9%	73.3%	100.0%	8.3%	97.5%	84.1%	90.0%



Hertfordshire and  
West Essex Integrated  
Care System



Source: [Ardens Manager](#)



# CVD & Other Long-Term Conditions: ECF & QOF Indicators

- The 2024/25 ECF CVD indicators are shown on this page; however, all the other ECF LTC indicators can be viewed via the Ardens Manager 2024/25 QOF pages [here](#).
- Reviewing South Uttlesford PCN on percentage achieved from the 2024/25 ECF, we can see that:
  - There is opportunity to increase the percentage achieved for Heart Failure ECF Indicators

	Heart Failure					Heart Failure		
	ECF					QOF		
	Ejection fraction recorded (ever)	NYHA classification done	On SGL2i or issued in last 3m (if preserved ejection fraction)	Palliative care referral (or declined) (if NYHA Stage III or IV)	Social prescribing/IAPT referral done (or declined)	HF003: LVD + on ACEi/ARB	HF006: LVD + on beta-blocker	HF007: Review + assessment of functional capacity
ICB	80.1%	46.4%	31.5%	1.4%	13.4%	95.6%	97.0%	91.9%
West Essex Place	78.9%	48.3%	27.3%	0.6%	14.1%	96.3%	97.2%	91.8%
Uttlesford Locality	80.0%	46.5%	30.0%	2.0%	10.4%	97.1%	97.6%	95.3%
NORTH UTTLESFORD PCN	82.5%	43.8%	39.0%	1.3%	15.8%	96.8%	97.7%	95.5%
SOUTH UTTLESFORD PCN	78.0%	48.6%	21.9%	2.7%	6.1%	97.3%	97.6%	95.1%



Hertfordshire and West Essex Integrated Care System



Source: [Ardens Manager](#)

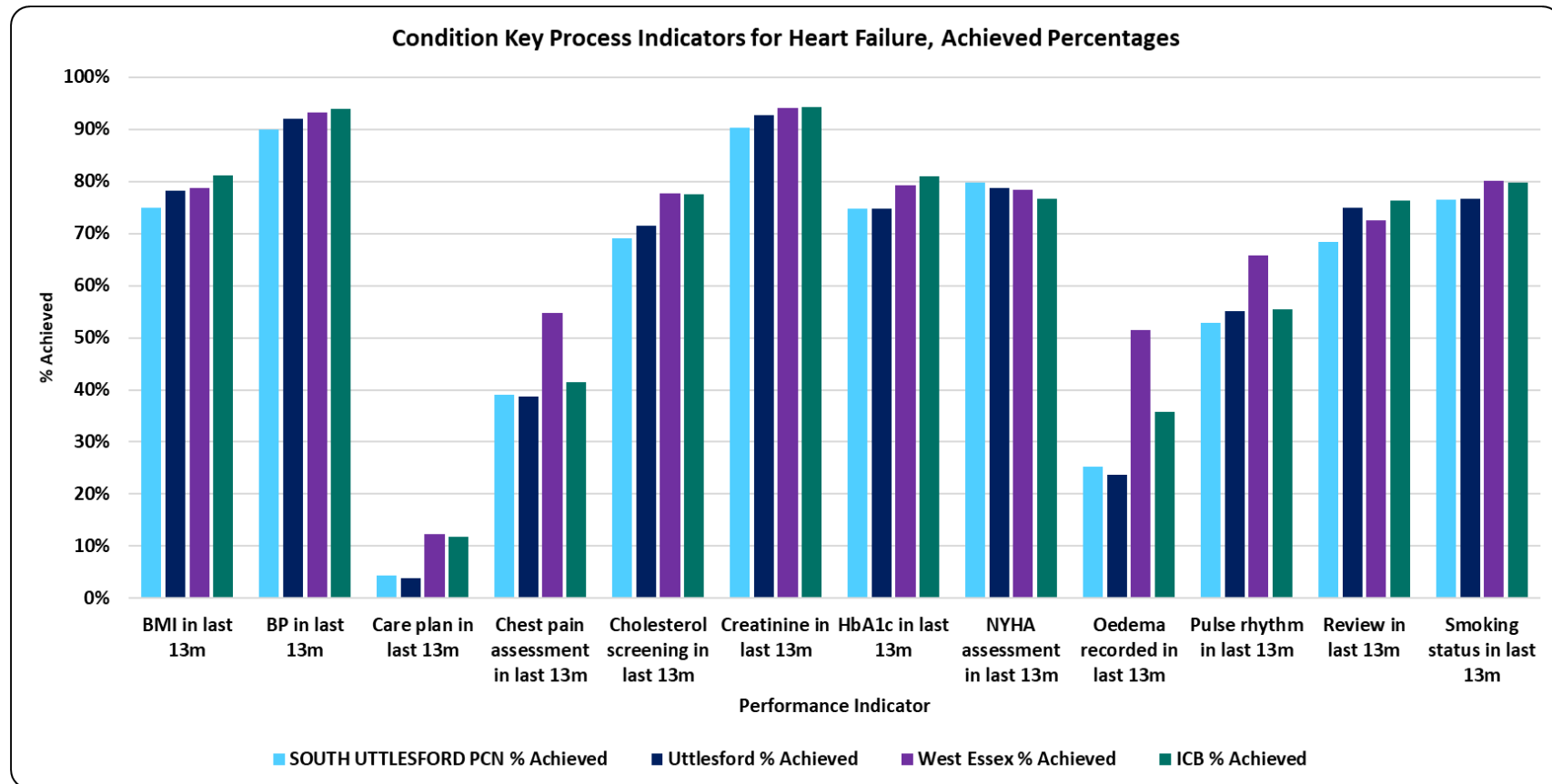


# CVD & Other Long-Term Conditions: Key Heart Failure Care Processes

Current CVD key care review process indicators are shown on this page for Heart Failure only due to limitations of space; however, all the other many CVD and other Long-Term Condition indicators can be viewed in detail via the Ardens Manager pages [here](#).

The Heart Failure key process indicators, shows opportunity for South Uttlesford PCN:

- BMI checks
- Blood Pressure recordings
- Care Plans
- Chest Pain
- Cholesterol checks
- Oedema Recordings
- Pulse Rhythms Tests
- Patient Reviews



Hertfordshire and  
West Essex Integrated  
Care System



Source: [Ardens Manager](#)





Hertfordshire and  
West Essex Integrated  
Care System



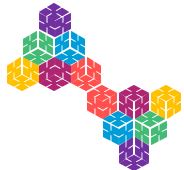
Hertfordshire and  
West Essex  
Integrated Care Board

# Mental Health and Learning Disabilities

## Management and Outcomes

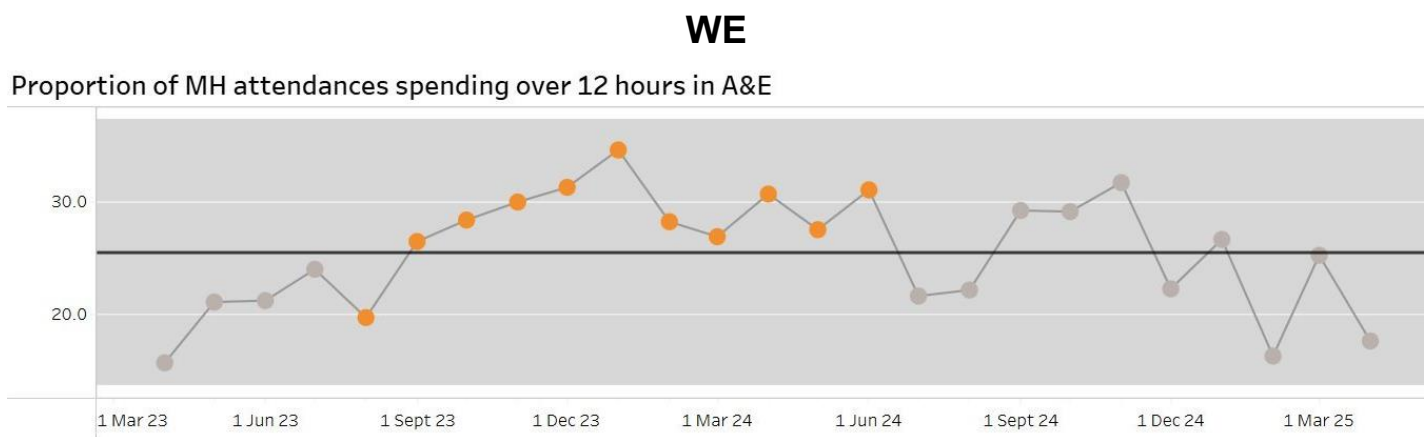
Working together  
for a healthier future





# Better care for Mental Health Crisis: Medium Term Plan Indicators

- MH measures developed within the MTP dashboard for Out of Area placement and Community Crisis Service are currently only available on an ICB footprint.
- The graph on the right shows the proportion of mental health attendances at A&E spending over 12 hours in A&E. Recent months data shows a slight decrease in the proportion of MH attendances spending over 12 hours in A&E.
- Note: PAH & ENHT have changed the way in which SDEC is being coded resulting in much lower emergency admissions counts from November '24 onwards.



Hertfordshire and  
West Essex Integrated  
Care System



Source: [DELPPHI - HWE Mid Term Plan Dashboard](#)



# Mental health: Programme outcomes

- HWE programme outcomes provide an opportunity for our ICS to focus on the end point health outcomes that best practice and evidenced interventions will deliver to improve the health of our population.
- The graph below illustrates a core set of population health indicators from DELPPHI which have been broken down at PCN level to provide assurance that activities are delivering the required impact.
- Emergency admissions for preventable ACSC conditions have decreased compared to the previous period, although associated costs have risen.
- Suicide mortality figures remain consistent with the previous period.

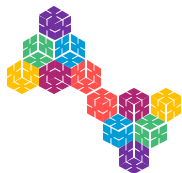
		Current Period	Previous Period	Difference	% Difference
Measure Cat	Measure				
Whole System	Emergency Admissions, Preventable Chronic Ambulatory Care Sensitive Conditions, DSR per 100,000, aged between 0-120	34.6 20 / 57,084	51.1 26 / 48,537	-16.5	-32.3%
	Total Cost of Emergency Hospital Care, DSR per 100,000, aged between 0-120	£2,297k £1,352k / 57,084	£2,113k £1,072k / 48,537	£183,464	8.7%
Programme	Mortality, Suicide, DSR per 100,000, aged between 10-120	Supressed due to small numbers			
	Emergency Admissions, Intentional Self-Harm, DSR per 100,000, aged between 0-120	Supressed due to small numbers			
Workstream	Mortality, Dementia / Alzheimer'S Disease, DSR per 100,000, aged between 0-120	Supressed due to small numbers			



Hertfordshire and  
West Essex Integrated  
Care System



Source: [DELPPHI - HWE Outcomes Dashboard](#)



# Depression and SMI: QOF indicators

- Mental Health QOF metrics for 2024-25 show that South Uttlesford PCN achievement for depression is lower compared with ICB and WE.
- For SMI (QOF Mental Health) indicators higher proportions of people in South Uttlesford PCN receive the interventions compared with WE and the ICB.
- The individual practices can be viewed within the QOF data using the link in the bottom right.
- Arden's searches are available to practices to identify those people with SMI without a care plan or recording of monitoring.

	Depression		Mental Health							
	Review		Review							
	DEP004 CURRENT: Reviewed 10-56d after diagnosis if >18y (2024-25)	DEP004 PROTECTED: Reviewed 10-56d after diagnosis if >18y (2023-24)	MH002: Care plan done in last 12m	MH003: BP done in last 12m	MH006: BMI done in last 12m	MH007: Alcohol consumption done in last 12m	MH011: Lipid profile in last 24m or 12m if antipsychotics/CVD/smoker/overweight	MH012: HbA1c or blood glucose done in last 12m	MH021 CURRENT: All 6 core physical health checks complete (2024-25)	MH021 PROTECTED: All 6 core physical health checks complete (2023-24)
ICB	79.6%	85.4%	89.8%	95.4%	95.4%	95.2%	93.0%	92.8%	74.7%	75.9%
West Essex WE	82.3%	85.4%	90.7%	96.9%	96.6%	97.1%	93.8%	93.8%	76.9%	75.1%
Uttlesford Locality	84.3%	85.7%	94.2%	98.6%	97.2%	98.4%	95.6%	95.7%	84.6%	86.8%
NORTH UTTLESFORD PCN	87.9%	89.4%	94.3%	98.3%	97.5%	98.4%	95.2%	95.5%	87.0%	87.3%
SOUTH UTTLESFORD PCN	81.9%	83.5%	94.2%	98.9%	96.9%	98.4%	96.0%	96.0%	81.4%	85.9%



Hertfordshire and  
West Essex Integrated  
Care System



Source: [Ardens Manager](#)



# SMI: ECF indicators

- The data shows that South Uttlesford PCN has a lower percentage for most SMI ECF indicators when compared against WE and the ICB.
- However, the PCN percentage for the proportion of people with SMI who have had a medication review completed in the last 12 months is above WE and the ICB.
- The data in the table below covers the period from April 2024 to March 2025. The most current information is available at [Ardens Manager](#).

	Severe Mental Illness							
	Extra			Local		Review		
	7. Nutrition/diet + level of physical activity done or exception in L12M	8. Use of illicit substance/non prescribed done or exception in L12M	9. Medication reconciliation/review	1. Waist circumference done or exception in L12M	Oral health recorded in last 12m	>=3 PHC items done or exception in L12M	>=4 PHC items done (in last 12m)	Care plan in L12M
ICB	8.4%	8.2%	17.1%	3.4%	8.9%	6.8%	61.0%	8.4%
West Essex WE	8.6%	7.5%	13.0%	2.4%	7.0%	6.1%	54.4%	9.0%
Uttlesford Locality	5.9%	5.5%	13.4%	3.8%	4.0%	3.8%	60.3%	7.0%
NORTH UTTLESFORD PCN	6.8%	6.1%	11.1%	5.4%	3.9%	3.9%	67.3%	8.6%
SOUTH UTTLESFORD PCN	4.9%	4.9%	15.8%	2.3%	4.1%	3.8%	52.6%	5.3%



Hertfordshire and  
West Essex Integrated  
Care System



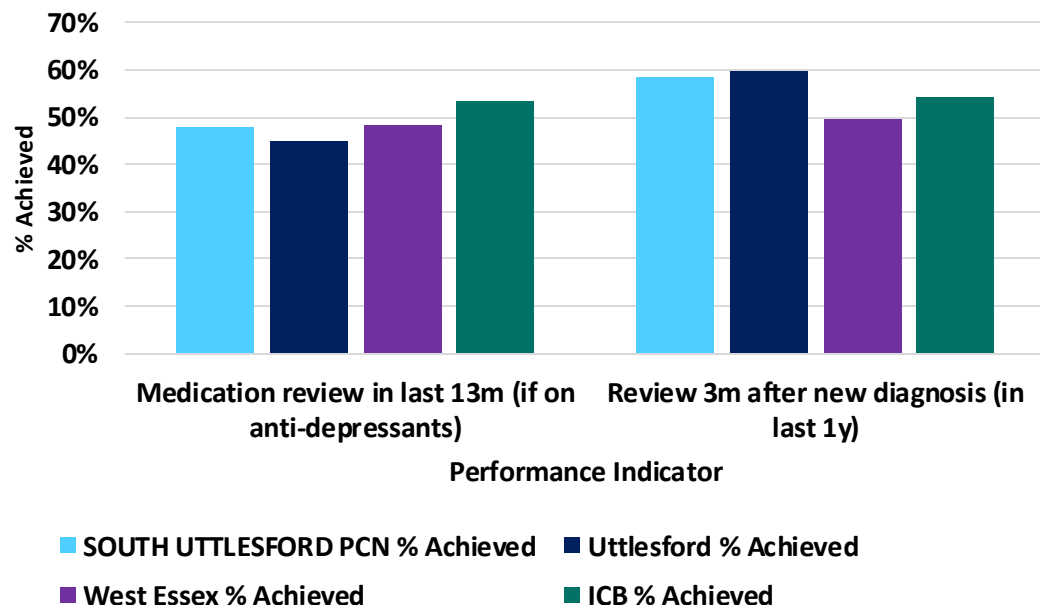
Source: [Ardens Manager](#)



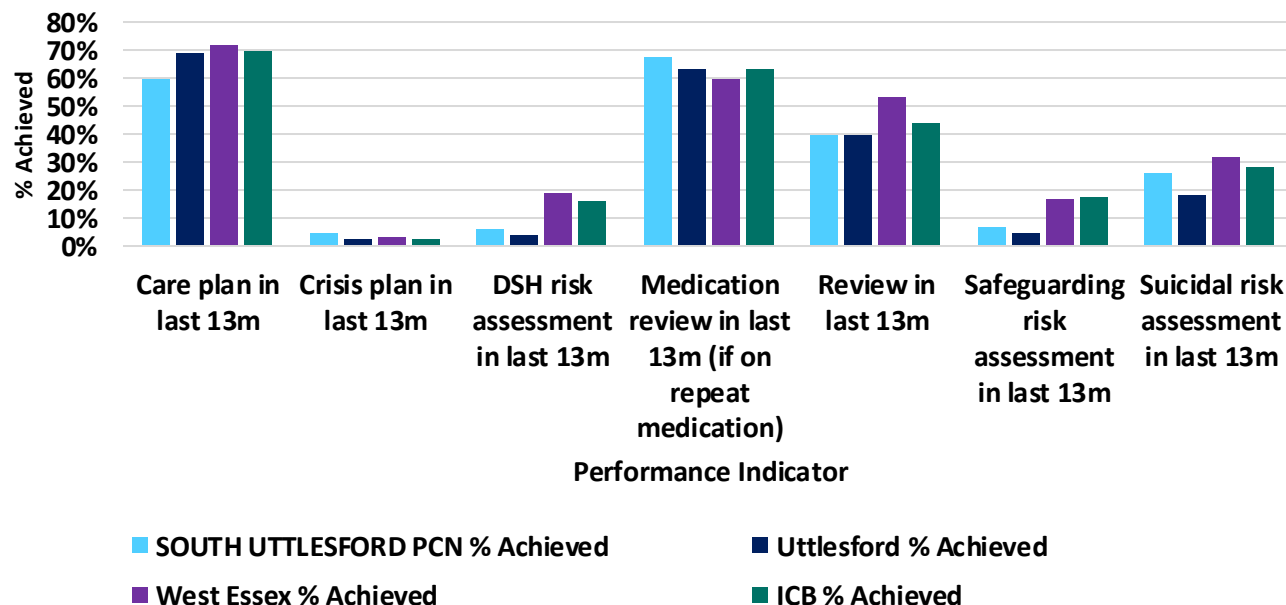
# SMI and Depression: Key process indicators

- In the past year, South Uttlesford PCN recorded a higher rate of depression reviews conducted three months after diagnosis, compared to WE and the ICB.
- The PCN is achieving slightly higher with the number of medication reviews completed for SMI patients in comparison to WE and the ICB. All other reviews can be found in [Ardens Manager](#).

Condition Key Process Indicators for Depression, Achieved Percentages



Condition Key Process Indicators for Severe Mental Illness, Achieved Percentages



Hertfordshire and  
West Essex Integrated  
Care System



Source: [Ardens Manager](#)



# Learning Disability: ECF indicators

- The data shows a lower percentage of people with learning disability in South Uttlesford PCN with ECF indicators recorded when compared against WE and the ICB.
- The data in the table below covers the period from April 2024 to March 2025. The most current information is available at [Ardens Manager](#).

	Learning Disability						
	Review			Local		Review	
	Action plan done or declined (if LD + >=14y)	Annual health check done or declined (if LD + >=14y)	BP done or exception + >=14y	Communication needs + reasonable adjustments recorded (if LD or Autism + >=14y)	Communication status + reasonable adjustments recorded (if LD + >=14y)	Health check done (or declined) + action plan done (or declined) (if LD + >=14y)	Reasonable Adjustments: recorded or reviewed
ICB	47.9%	48.8%	18.9%	11.8%	13.8%	47.6%	4.5%
West Essex WE	48.4%	49.1%	18.7%	8.4%	11.4%	47.7%	3.4%
Uttlesford Locality	44.0%	45.2%	12.3%	6.9%	10.1%	43.7%	2.0%
NORTH UTTLESFORD PCN	47.3%	48.3%	13.7%	7.5%	10.3%	46.7%	3.1%
SOUTH UTTLESFORD PCN	40.2%	41.7%	10.6%	6.4%	9.8%	40.2%	0.7%



Hertfordshire and  
West Essex Integrated  
Care System



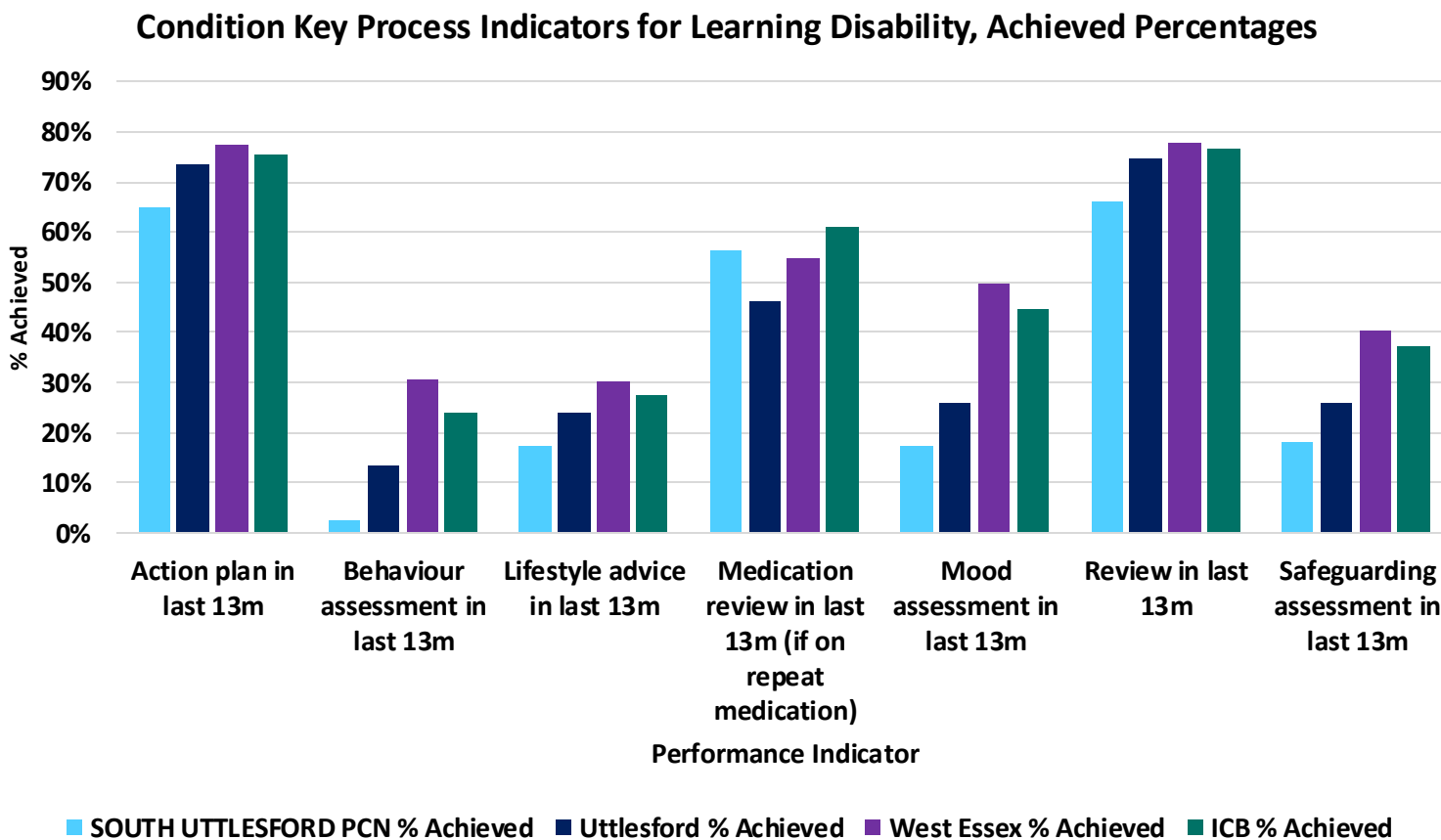
Source: [Ardens Manager](#)





# Learning Disability: Key process indicators

- South Uttlesford PCN is achieving a lower percentage completeness against WE and the ICB in several key learning disability processes.
- Further detail by practice and more detailed indicators can be found in [Ardens Manager](#).



Hertfordshire and  
West Essex Integrated  
Care System



Source: [Ardens Manager](#)



Hertfordshire and  
West Essex Integrated  
Care System

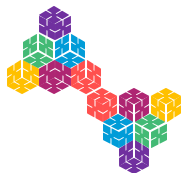


Hertfordshire and  
West Essex  
Integrated Care Board

# Cancer and Planned Care Management and outcomes

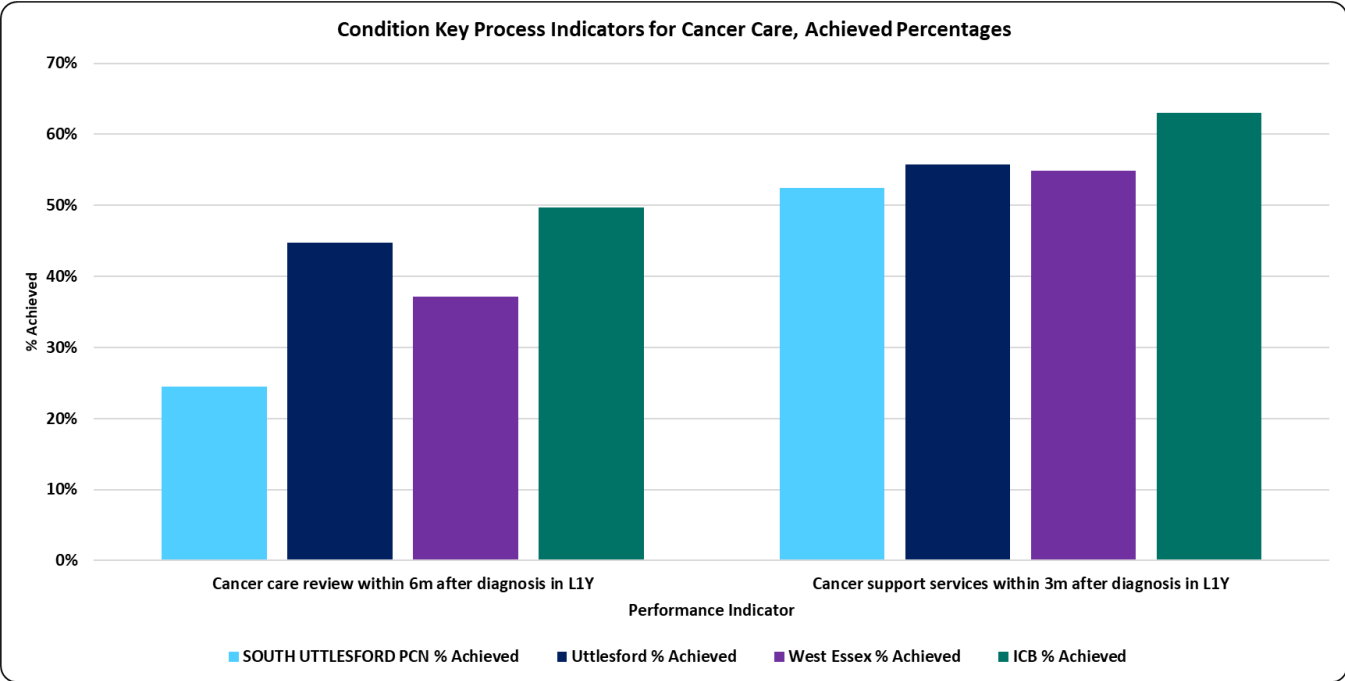
Working together  
for a healthier future





# Cancer: QOF and Key processes indicators

- The data shows the PCN has a similar proportion of people offered cancer support services within 3 months after diagnosis compared with WE.
- A lower proportion of people living with cancer in South Uttlesford have received a review within 6 months of diagnosis.
- The latest position for this table below, can be found at [Ardens Manager](#).



	Cancer			
	Review			
	CAN004 CURRENT: Cancer care review within 12m of diagnosis (2024- 25)	CAN004 PROTECTED: Cancer care review within 12m of diagnosis (2023- 24)	CAN005 CURRENT: Support information given within 3m of diagnosis (2024-25)	CAN005 PROTECTED: Support information given within 3m of diagnosis (2023-24)
ICB	92.1%	94.9%	84.9%	87.8%
West Essex WE	88.2%	91.0%	78.7%	80.0%
Uttlesford Locality	96.9%	93.8%	84.4%	91.4%
NORTH UTTLESFORD PCN	97.9%	95.2%	88.1%	91.7%
SOUTH UTTLESFORD PCN	95.4%	92.0%	81.2%	91.2%





Hertfordshire and  
West Essex Integrated  
Care System



Hertfordshire and  
West Essex  
Integrated Care Board

# Frailty and End of Life care Management and outcomes

Working together  
for a healthier future



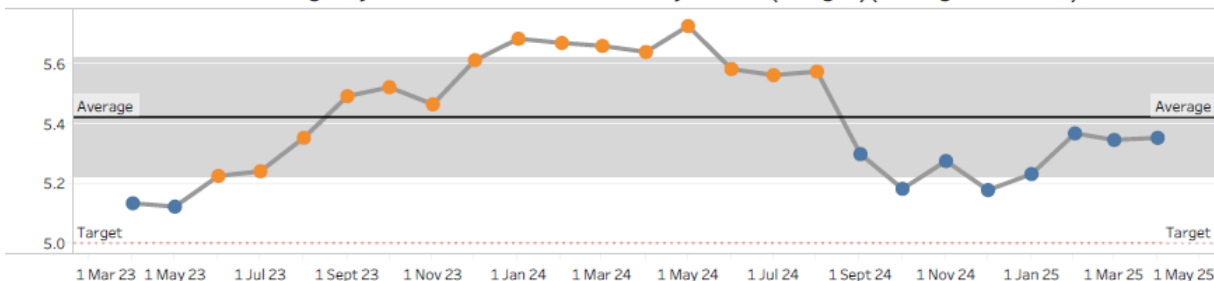


# Frailty and EOL: Medium Term Plan Indicators

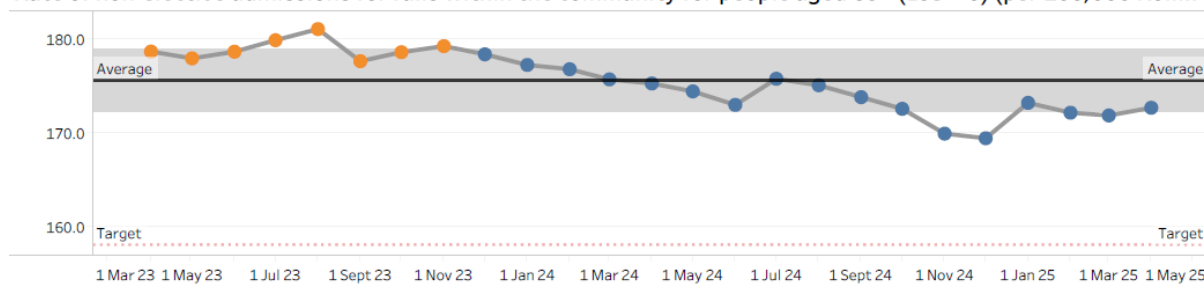
- The trend charts indicates the WE targets and what their current trajectory is for the relevant measure.
- PAH & ENHT have changed the way in which SDEC is being coded resulting in much lower emergency admissions counts from Nov-24 onwards. Measures which reference emergency admissions will show lower due to this coding change. This affects West Essex and East and North Herts and the ICB as a whole. Emergency admission data should be treated with caution.

## WE

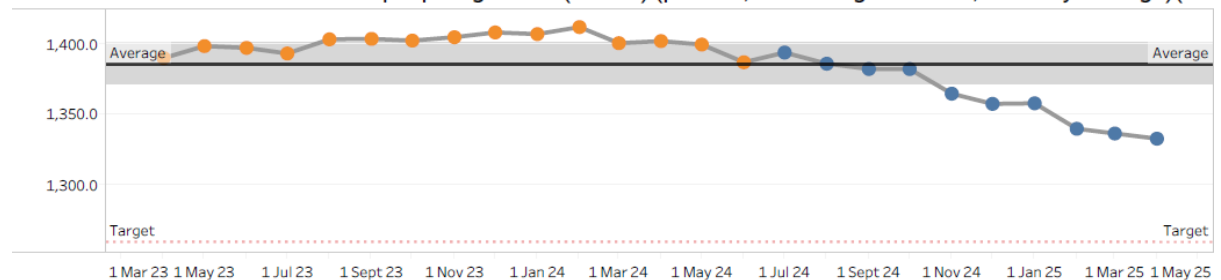
Deaths with 3 or more emergency admissions in the last 90 days of life (all ages)(Rolling 12 months)



Rate of non-elective admissions for falls within the community for people aged 65+ (LoS > 0) (per 100,000 Rolli..



Rate of non-elective admissions in people aged 65+ (LoS > 0) (per 100,000 rolling 12 month, monthly average)(C..



Hertfordshire and  
West Essex Integrated  
Care System



Source: [DELPPHI - HWE Mid Term Plan Dashboard](#)



# Frailty and EOL: Programme outcomes

- This data is for a rolling 12 months, and the percentage difference in red indicates that the current period, has deteriorated against the previous period.
- This data for South Uttlesford shows an increase in total spend for emergency hospital care. Increasing activity can be seen for length of stay greater than 0 and readmissions.
- The [7 interventions](#) dashboards has further detail of underlying metrics for community falls and FRAT scores completed.
- Please use the following [link](#) for DELPPHI to review HWE, WE, PCN and GP practice measures, demographics and INT.

## South Uttlesford

Measure Cat	Measure	Current Period	Previous Period	Difference	% Difference
Whole System	Emergency Admissions, Preventable Chronic Ambulatory Care Sensitive Conditions, DSR per 100,000, aged between 65-120	166.8 19 / 11,341	180.4 18 / 9,637	-13.6	-7.5%
	Total Cost of Emergency Hospital Care, DSR per 100,000, aged between 65-120	£7,422k £864k / 11,341	£6,145k £621k / 9,637	£1,277,117	20.8%
Programme	Emergency Admissions, Stay Under 24 hours, DSR per 100,000, aged between 65-120	387.9 45 / 11,341	650.1 64 / 9,637	-262.2	-40.3%
	Emergency Admissions LoS >0, Moderate/ Severe Frail at Admission (GP SUBMITTING PRACTICES ONLY), DSR per 100,000, aged between 65-120	Suppressed due to small numbers			
	Emergency Admissions LoS >0, DSR per 100,000, aged between 65-120	1,274.1 149 / 11,341	1,196.7 121 / 9,637	77.4	6.5%
	Emergency Admissions LoS >0, Falls Within the Community, DSR per 100,000, aged between 65-120	159.3 19 / 11,341	157.4 16 / 9,637	1.9	1.2%
	Percentage of Mortality, 3 or More Emergency Admissions in Last 90 Days Of Life, Percentage of All Deaths Over 28 Days, aged between 65-120	Suppressed due to small numbers			
	Emergency Admissions LoS >0, Hip Fractures, DSR per 100,000, aged between 65-120	Suppressed due to small numbers			
Workstream	Percentage of Emergency Admissions LoS >0, Falls Within the Community, Discharge to Usual Place of Residence, aged between 65-120	68.4% 13 / 19	68.8% 11 / 16	-0.3%	-0.5%
	Percentage of Emergency Admissions LoS >0, EM Pathways, Readmissions within 7 Days, aged between 65-120	Suppressed due to small numbers			
	Percentage of Emergency Admissions LoS >0, EM Pathways, Readmissions within 30 Days, aged between 65-120	13.7% 13 / 95	10.1% 9 / 89	3.6%	35.3%



Hertfordshire and  
West Essex Integrated  
Care System

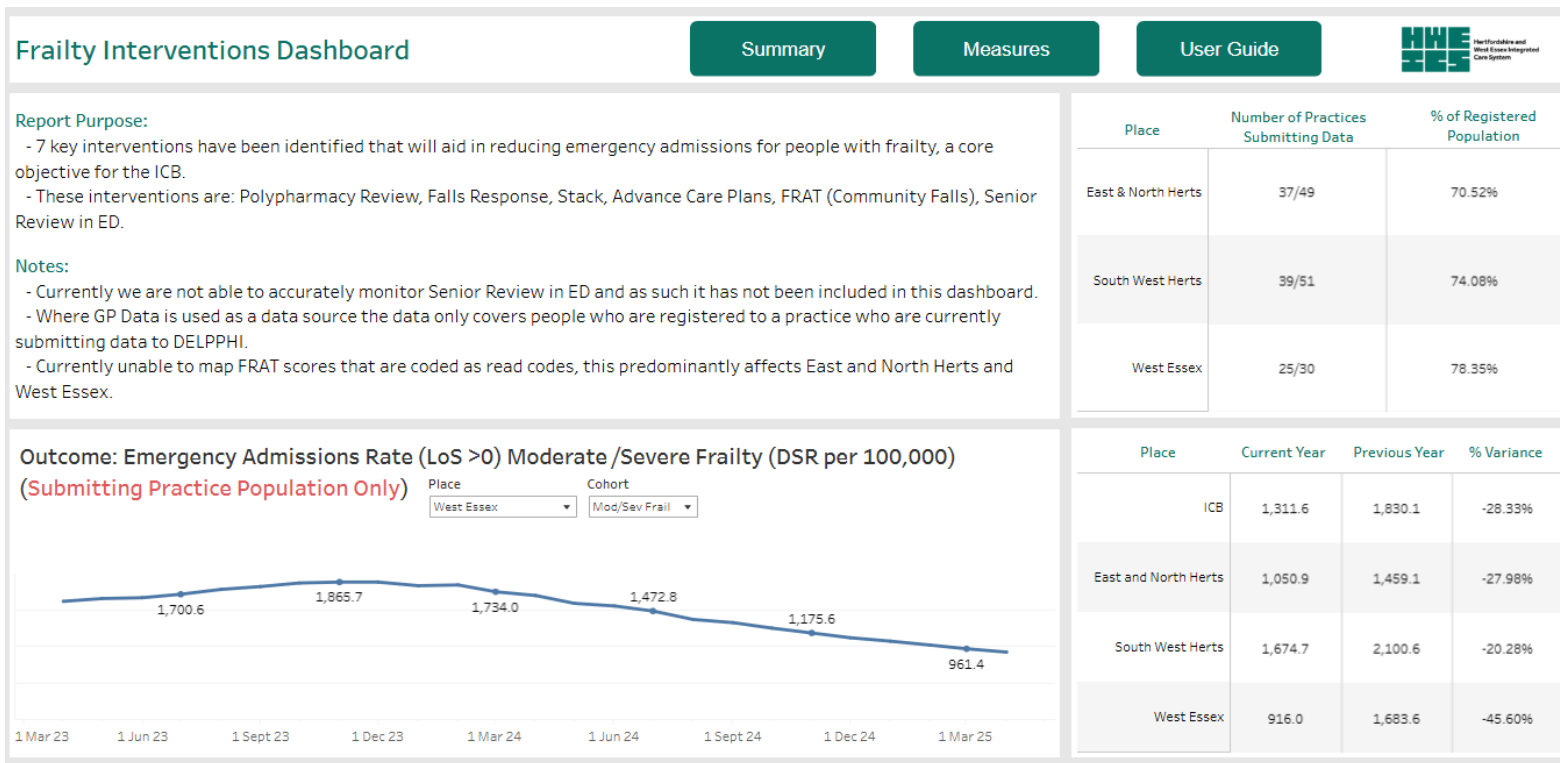


Source: [DELPPHI - HWE Outcomes Dashboard](#)



# Frailty and EOL: Indicators from the 7 interventions dashboard

- This dashboard has been designed in DELPPHI to support 7 interventions that have been identified in aiding in the reduction of Emergency admissions for people with frailty.
- The dashboard is currently available by ICB and Place.
- Emergency Admission rate for people identified with moderate/ severe frailty (from the primary care record) has seen a decrease over the last 2 years
- To gain maximum benefit from this dashboard, please click on this [link](#).

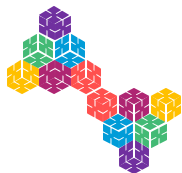


Hertfordshire and  
West Essex Integrated  
Care System



Source: [DELPPHI - Frailty Intervention Dashboard](#)





# Frailty and EOL: ECF indicators

- The data shows that South Uttlesford has a lower percentage recording for most EOL and Frailty indicators, when compared to the WE and the ICB for 2024/25.
- The latest position for this table below, can be found at [Ardens Manager](#).

	End of Life								Frailty						
	Review								Review						
	ACP shared	ACP, ReSPECT or EOL care plan done or declined	Anticipatory medicines issued (or exception) (if GSF red/yellow)	GSF prognostic indicator recorded	Preferred place of care recorded	Preferred place of care, death and resus stated recorded	Preferred place of death recorded	Resus status recorded (or currently DNACPR)	Carer status recorded (if moderate/se vere frailty)	Depression screening done (if moderate/se vere frailty)	Frailty status recorded (if moderate/se vere frailty)	Loneliness assessment done (if moderate/se vere frailty)	Mod/Sev + carer status recorded (excl care home + GSF red)	Mod/Sev + falls FRAT score done	Mod/Sev + falls FRAT score done (excl care home + GSF red)
ICB	1.5%	40.1%	61.3%	49.0%	69.4%	14.1%	67.4%	74.1%	67.8%	33.8%	77.0%	61.5%	13.9%	64.8%	12.2%
West Essex Place	2.7%	33.4%	62.1%	49.3%	68.1%	12.9%	66.4%	70.9%	68.7%	48.1%	72.6%	61.8%	10.5%	64.5%	10.8%
Uttlesford Locality	9.4%	33.6%	68.2%	45.0%	73.0%	16.0%	73.1%	71.5%	68.6%	34.1%	69.4%	61.1%	10.8%	64.7%	9.5%
NORTH UTTLESFORD PCN	15.5%	44.2%	74.4%	50.1%	67.4%	22.1%	67.4%	73.9%	70.9%	24.0%	79.2%	64.8%	13.1%	68.1%	11.6%
SOUTH UTTLESFORD PCN	2.4%	21.4%	59.4%	39.1%	79.5%	8.9%	79.7%	68.6%	67.3%	39.8%	63.8%	59.1%	9.3%	62.7%	8.1%



Hertfordshire and  
West Essex Integrated  
Care System

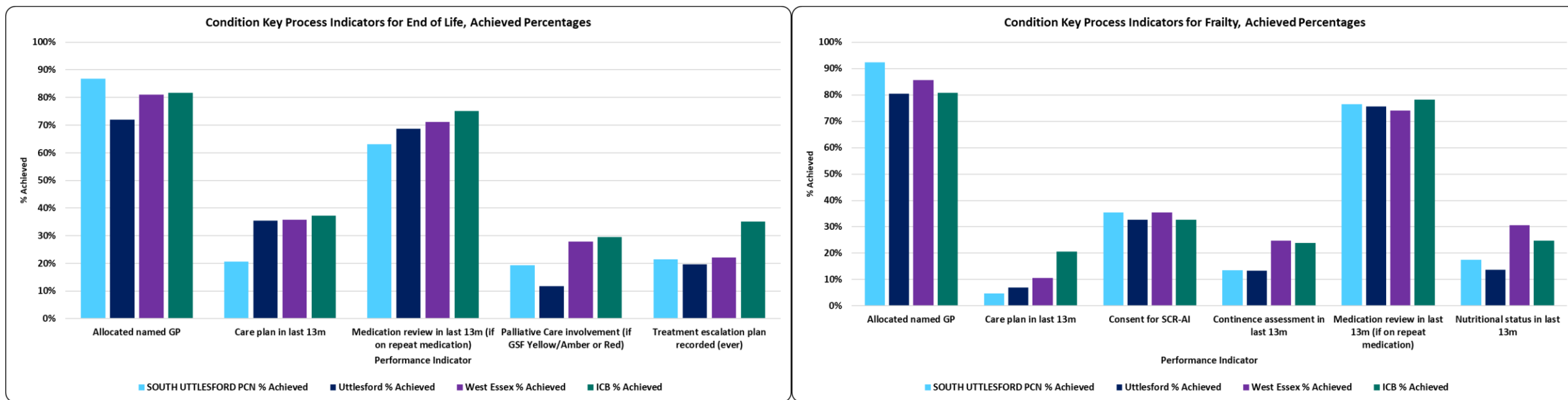


Source: [Ardens Manager](#)



# Frailty and EOL: Key processes indicators

- South Uttlesford has opportunities to increase the number of recorded care plans and medication reviews for EoL.
- Ardens searches are available for practices to identify those people on frailty and EOL register and what processes have and still need to be completed. The latest reported data can be accessed via the link on the bottom right.



Hertfordshire and  
West Essex Integrated  
Care System



Source: [Ardens Manager](#)



# Dementia: Programme outcomes

- HWE programme outcomes provide an opportunity for our ICB to focus on the end point health outcomes that best practice and evidenced interventions will deliver to improve the health of our population.
- The table below illustrates a core set of population health indicators from DELPPHI which have been broken down at PCN level to provide assurance that activities are delivering the required impact.
- Mortality from dementia and Alzheimer's disease has been suppressed due to small numbers. The link below can be followed to access the data where permitted.

		Current Period	Previous Period	Difference	% Difference
Measure Cat	Measure				
Whole System	Emergency Admissions, Preventable Chronic Ambulatory Care Sensitive Conditions, DSR per 100,000, aged between 0-120	34.6 20 / 57,084	51.1 26 / 48,537	-16.5	-32.3%
	Total Cost of Emergency Hospital Care, DSR per 100,000, aged between 0-120	£2,297k £1,352k / 57,084	£2,113k £1,072k / 48,537	£183,464	8.7%
Programme	Mortality, Suicide, DSR per 100,000, aged between 10-120	Supressed due to small numbers			
	Emergency Admissions, Intentional Self-Harm, DSR per 100,000, aged between 0-120	Supressed due to small numbers			
Workstream	Mortality, Dementia / Alzheimer'S Disease, DSR per 100,000, aged between 0-120	Supressed due to small numbers			



Hertfordshire and  
West Essex Integrated  
Care System



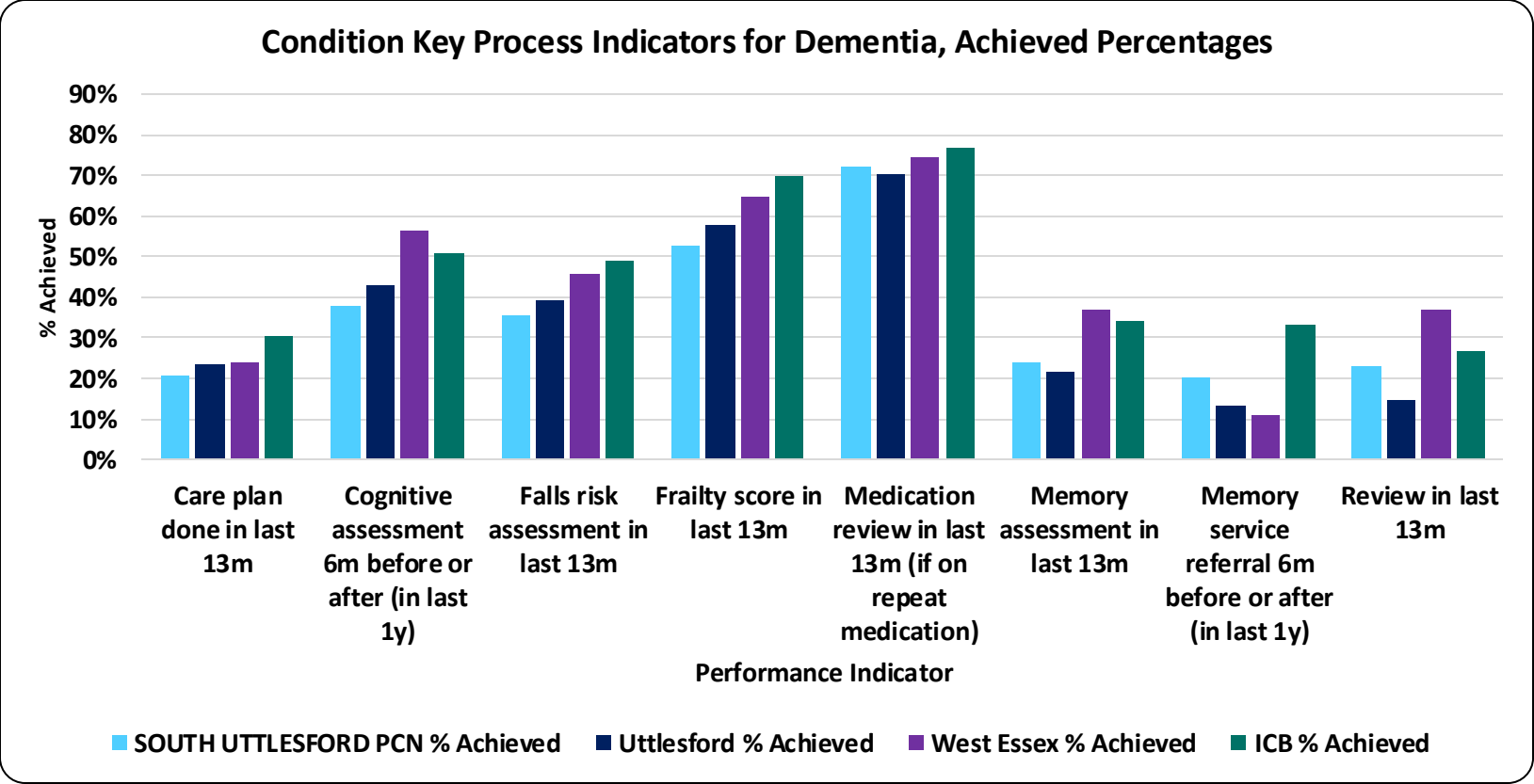
Source: [DELPPHI - HWE Outcomes Dashboard](#)



# Dementia: QOF and key process indicators

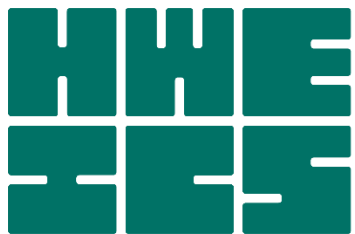
- Dementia QOF metrics for 2024-25 show that South Uttlesford PCN has a lower percentage of achievement levels for Care plans reviewed and other indicators when compared with ICB and WE.
- Within this there is variation between the PCNs. The individual practices can be viewed within the QOF data. Arden's searches are available to practices to identify those people with dementia without a care plan.

	Dementia Review
	DEM004: Care plan reviewed in last 12m
ICB	80.8%
West Essex WE	78.5%
Uttlesford Locality	79.5%
NORTH UTTLESFORD PCN	82.6%
SOUTH UTTLESFORD PCN	76.7%



Hertfordshire and West Essex Integrated Care System





Hertfordshire and  
West Essex Integrated  
Care System



Hertfordshire and  
West Essex  
Integrated Care Board

## Other key outcomes

Working together  
for a healthier future



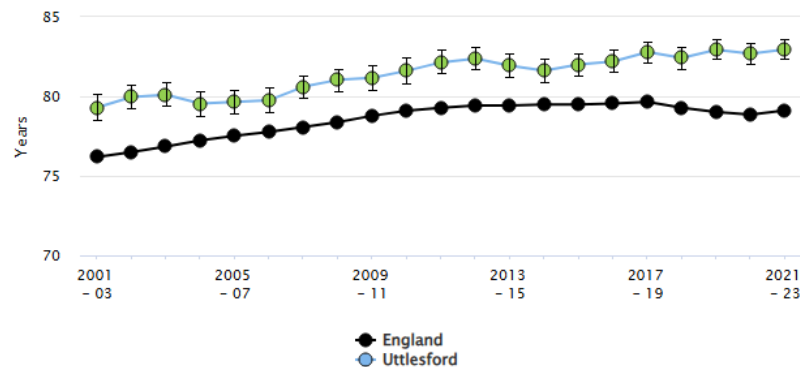


# Life Expectancy and Inequality in Life Expectancy at Birth

- Uttlesford's life expectancy for both male and female has remained consistently above EoE and England.
- Inequality of life expectancy for both male and female is in the best quintile, for 2021-23 period. This illustrates that for males in the most deprived quintiles will live nearly 2.7 years less than the least deprived quintiles, in Uttlesford. For females, the gap is 2.6 years.

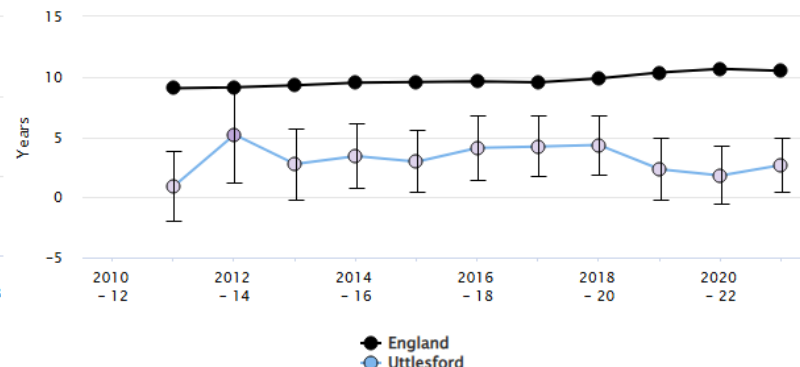
● Better 95% ● Similar ● Worse 95%

Life expectancy at birth (Male, 3 year range)

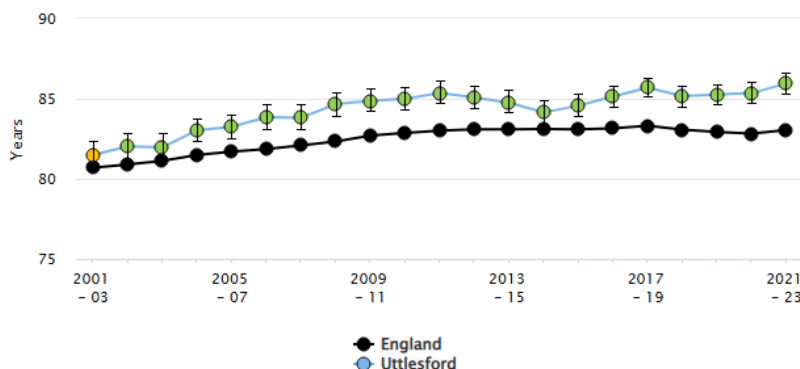


Quintiles: Best (lightest purple) to Worst (darkest purple)

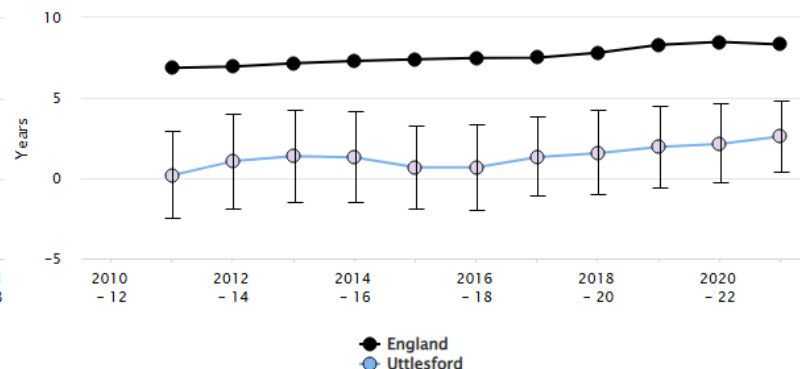
Inequality in life expectancy at birth (Male)



Life expectancy at birth (Female, 3 year range)



Inequality in life expectancy at birth (Female)



Hertfordshire and  
West Essex Integrated  
Care System



Source: [Fingertips | Department of Health and Social Care](#)



# Emergency Admission Rates for Ambulatory Care Sensitive Conditions (ACSC)

- For ACSC condition emergency admissions, the rate has not reached pre-Covid levels and are decreasing.
- Although these rates have fluctuated over the past two years, the overall trend is downward.
- The list of Chronic Ambulatory Care Sensitive Conditions can be found via the [NHS Outcomes Framework Indicators](#) and Indicator Specification as found through the link [here](#).
- Please use the following [link](#) for DELPPHI to review HWE, WE, PCN and GP practice measures, demographics and INT.

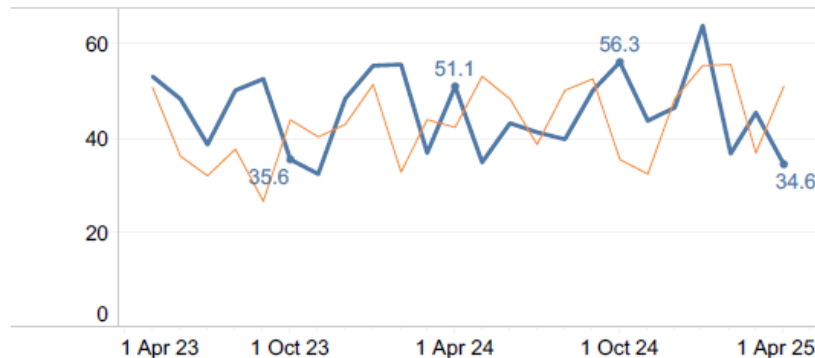
## South Uttlesford

Measure Cat	Measure	Current Period	Previous Period	Difference	% Difference
Whole System	Emergency Admissions, Preventable Chronic Ambulatory Care Sensitive Conditions, DSR per 100,000, aged between 0-120	34.6 20 / 57,084	51.1 26 / 48,537	-16.5	-32.3%

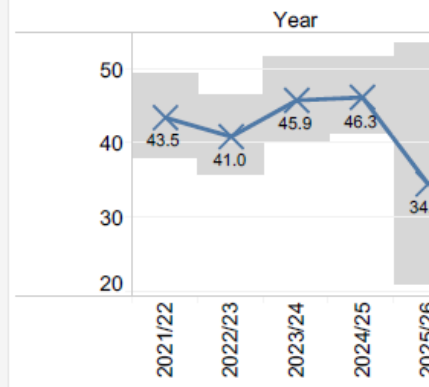
Emergency Admissions, Preventable Chronic Ambulatory Care Sensitive Conditions, DSR per 100,000, aged between 0-120

### Monthly Analysis

Selected | Same Period Last Year



### Annual Analysis



### Place Summary

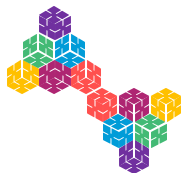
YTD | Same Period Last Year | 95% Confidence Interval



Hertfordshire and  
West Essex Integrated  
Care System



Source: [DELPPHI - HWE Outcomes Dashboard](#)



# Total cost of Emergency hospital care for South Uttlesford

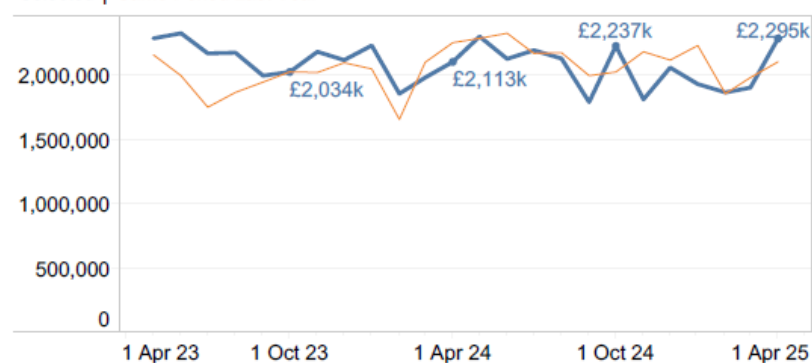
- There has been an increase in acute spend for emergency hospital care for South Uttlesford.
- Please use the following [link](#) for DELPPHI to review HWE, WE, PCN and GP practice measures, demographics and INT.
- PAH & ENHT have changed the way in which SDEC is being coded resulting in much lower emergency admissions counts from Nov-24 onwards. Measures which reference emergency admissions will show lower due to this coding change. This affects West Essex and East and North Herts and the ICB as a whole. Emergency admission data should be treated with caution.

Measure..	Measure	Current Period	Previous Period	Difference	% Difference
Whole System	Total Cost of Emergency Hospital Care, DSR per 100,000, aged between 0-120	£2,295k £1,351k / 57,084	£2,113k £1,072k / 48,537	£181,817	8.6%

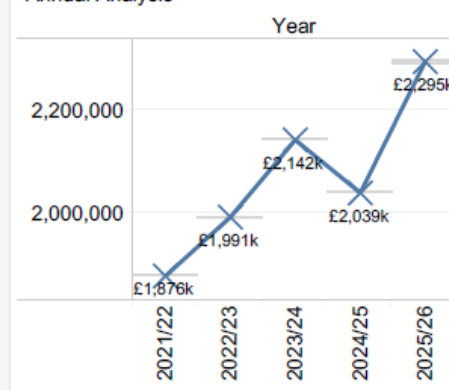
Total Cost of Emergency Hospital Care, DSR per 100,000, aged between 0-120

## Monthly Analysis

Selected | Same Period Last Year

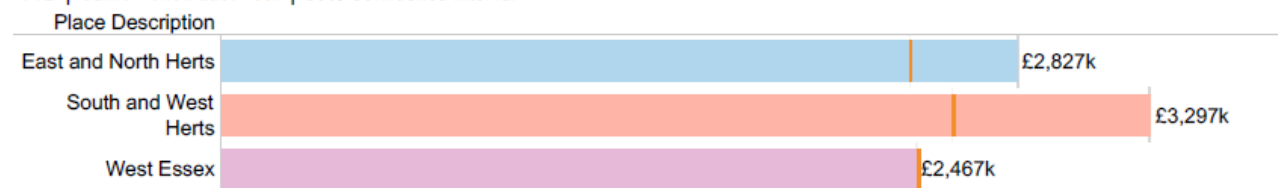


## Annual Analysis



## Place Summary

YTD | Same Period Last Year | 95% Confidence Interval



Hertfordshire and  
West Essex Integrated  
Care System



Source: [DELPPHI - HWE Outcomes Dashboard](#)





Hertfordshire and  
West Essex Integrated  
Care System

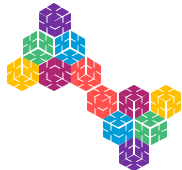


Hertfordshire and  
West Essex  
Integrated Care Board

## Glossary

Working together  
for a healthier future





# Glossary

## Segmentation Model

- Our segmentation model combines primary and acute care data with wider determinants and community, mental health and social care data where available. The segmentation model provides the foundations for advanced population health management analytics that goes beyond patient level risk stratification.
- The ICB Segmentation model is based on patient data flowing from GP practices that have agreed to share their data with the ICB, at the time of this Pack production currently 72.8% of total ICB GP data is available, therefore any Segmentation data shown is likely to possibly change the percentages in all segments. Coding is also an important factor to ensure data quality and consistency.

### Practices currently flowing data to DELPPHI as at 8<sup>th</sup> July 25

PCN	Practice Name	Flowing data
South Uttlesford	Angel Lane Surgery	✓
	John Tasker House Surgery	✓
	Stansted Surgery (Now Peacock)	✓
	The Eden Surgeries	✓

## Coding

- As with all information reported in this pack, the quality of the reports is determined by the completeness and quality of data recording for example if codes are not completed then less patients will be identified with a particular condition.
- Long Term Conditions (LTC)
- Behavioural Risk Factors (BRF)



Hertfordshire and  
West Essex Integrated  
Care System



Source: [DELPPHI - HWE Outcomes Dashboard](#)